



TF45/60

by
LIFT SYSTEMS, INC.



***Global Leaders in Specialized
Lifting Equipment!***



TF45/60

GENERAL SPECIFICATIONS

STANDARD EQUIPMENT

ENGINE:

GM 3.0L, 4 cylinder, 75 hp (56 Kw) propane engine

PUMP:

Sundstrand 40 series drive pump

CONTROL SYSTEM:

CARL (Computer Assisted Remote Lifting) Control System. Monitors Boom Angle, Boom Extension, Pressure, Counterweight Load Pin. Automatic Shutdown for overload conditions. Large easy to read display screen with push button navigation and dial adjustment.

CONTROLS:

Separate controls for each function. Combination of foot pedal, joystick, and push button controls allows for multiple functions to be performed at the same time.

DRIVE:

Rockwell planetary drive axle. Full hydrostatic system with spring applied brakes.

WHEELS:

Front: qty. (4)

Diameter: 28"

Width: 12"

Rear: qty. (2)

Diameter: 28"

Width: 12"

Replaceable polyurethane composition

OSCILLATING REAR STEERING BOX:

Keeps all steering wheels in contact with ground.

GRADABILITY:

Unloaded maximum grade is 26%

Loaded maximum grade is 15%

18,000 lbs of draw bar pull unloaded

TRAVEL SPEED UNLOADED:

High Gear: 2.75 mph

Low Gear: 0.75 mph

TELESCOPING COUNTERWEIGHT:

Standard counterweight section telescopes 4' using a hydraulic cylinder. Push button control.

HYDRAULIC RESERVOIR:

90 gallons (340 liters)

BOOM:

High strength two section telescoping boom. Replaceable wear pads on all sliding sections.

BOOM LIFT CYLINDER:

Single cylinder capable of lifting and lowering with a full load. Integral safety holding valve. Spherical bearing ensures constant alignment with the boom.

BOOM TELESCOPE CYLINDER:

Single cylinder capable of telescoping the boom in and out with a full load. Integral safety holding valve.

FORKS:

8' self leveling forks. Tilt angle controlled from operating station.

WEIGHT:

32,000 lbs base unit

Standard "A" counterweight included

COUNTERWEIGHTS:

"A" - non-removable counterweight installed in unit

Four (4) additional counterweight plates included with fork lift loops standard. Weight of each plate is 5,500 lbs.

Total of additional counterweight is 22,000 lbs.

TIE DOWN / LIFTING EYES:

Tie down / lifting eyes installed for securing unit during transport and for lifting of the unit.

DRIVER PROTECTION GUARD:

Structural overhead guard for operator protection.

OTHER STANDARD FEATURES:

Back up alarm, horn, strobe light, operator seat complete with safety belt and electric switch.

OPTIONAL EQUIPMENT

RIGGERS BOOM:

Hydraulic riggers boom attaches to fork attachment with the forks removed.

MOBILIFT BOOM:

7' boom pins on end of power section in place of fork attachment. Requires winch and block.

WINCH:

High performance hydraulic winch. Integral, full load brake. 250' of high capacity 5/8" wire rope standard.

BLOCK:

30 (27) ton block standard. Low profile with swivel hook.

ANTI-TWO-BLOCK DEVICE:

Safety device installed to prevent hook block from contacting boom.

RADIO REMOTE CONTROL:

Radio remote control allows full machine functionality from a wireless radio remote. Allows operator optimal view of load. Emergency safety shutdown switch is standard.

JIB EXTENSION:

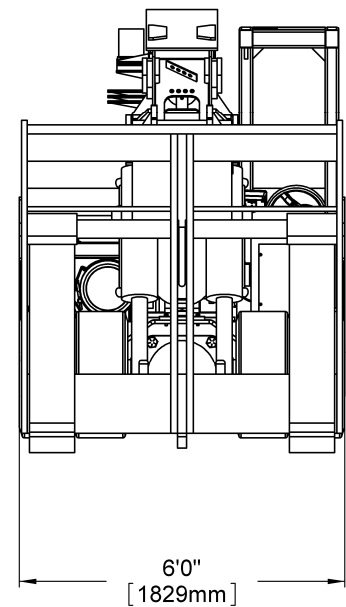
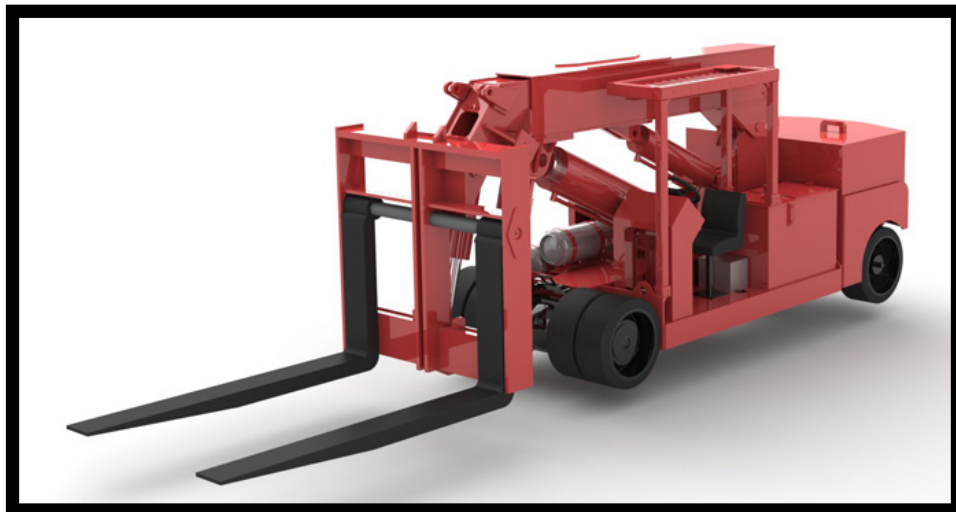
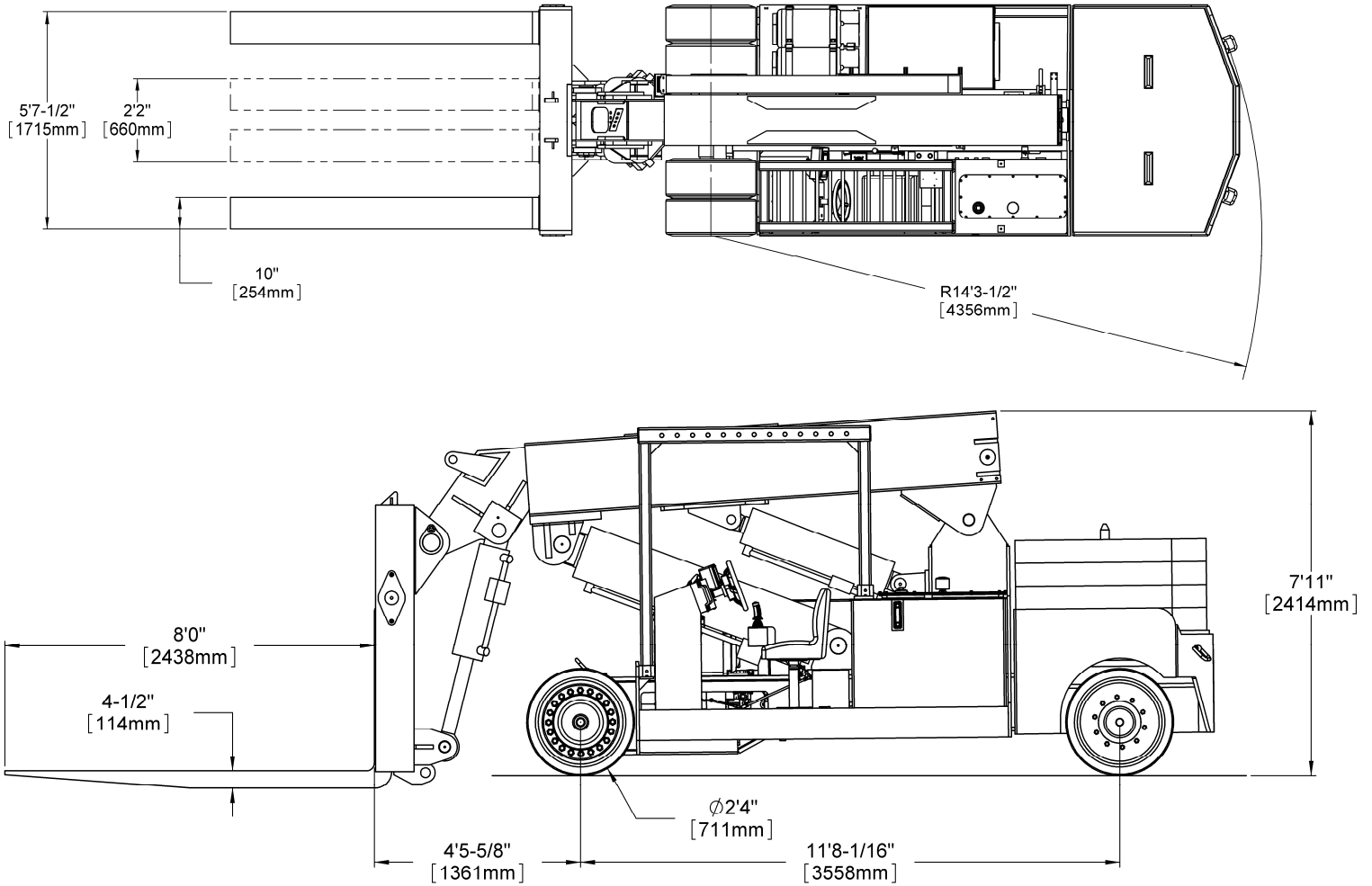
Consult factory for available capacities



TF45/60

AS A FORKLIFT

DIMENSIONAL DATA



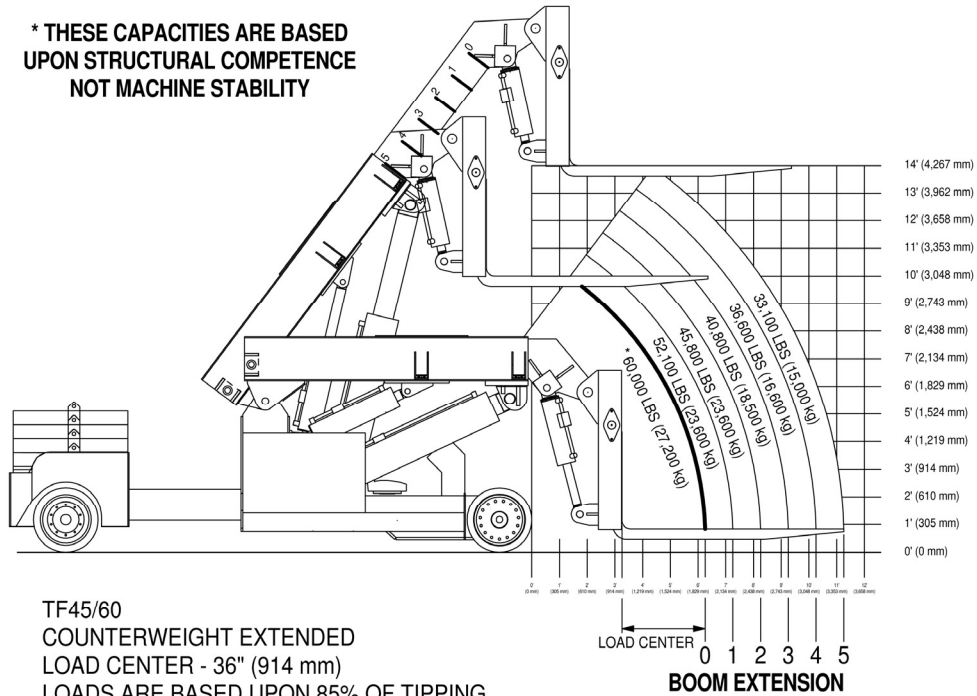


TF45/60

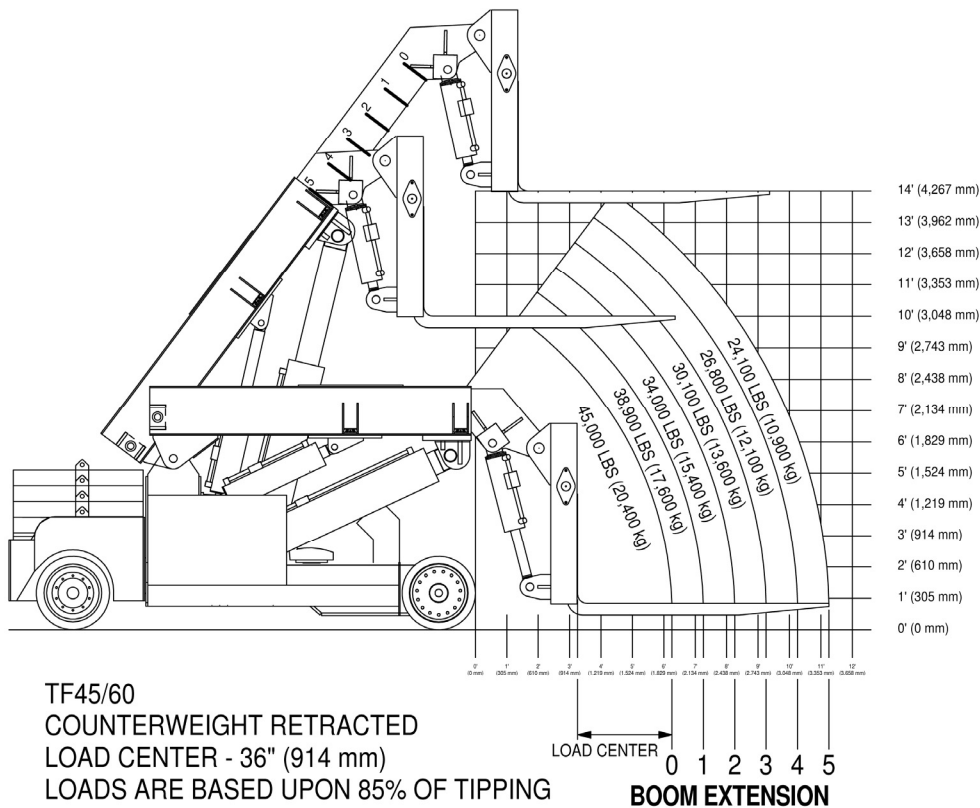
AS A FORKLIFT

LOAD CHARTS FOR FORKLIFT WITH COUNTERWEIGHT EXTENDED

* THESE CAPACITIES ARE BASED UPON STRUCTURAL COMPETENCE NOT MACHINE STABILITY



LOAD CHARTS FOR FORKLIFT WITH COUNTERWEIGHT RETRACTED

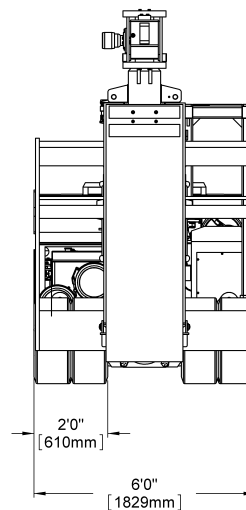
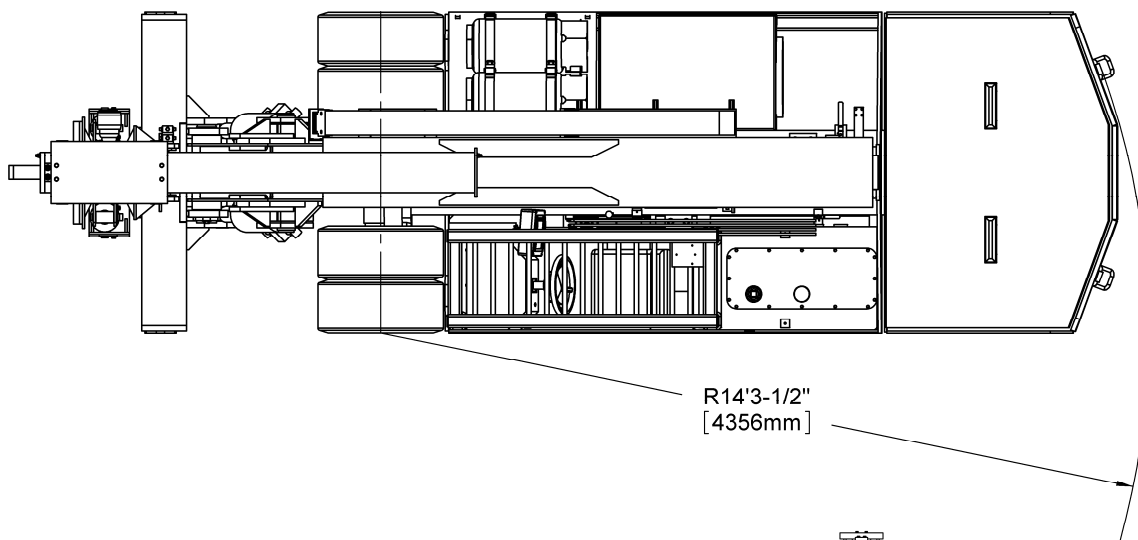
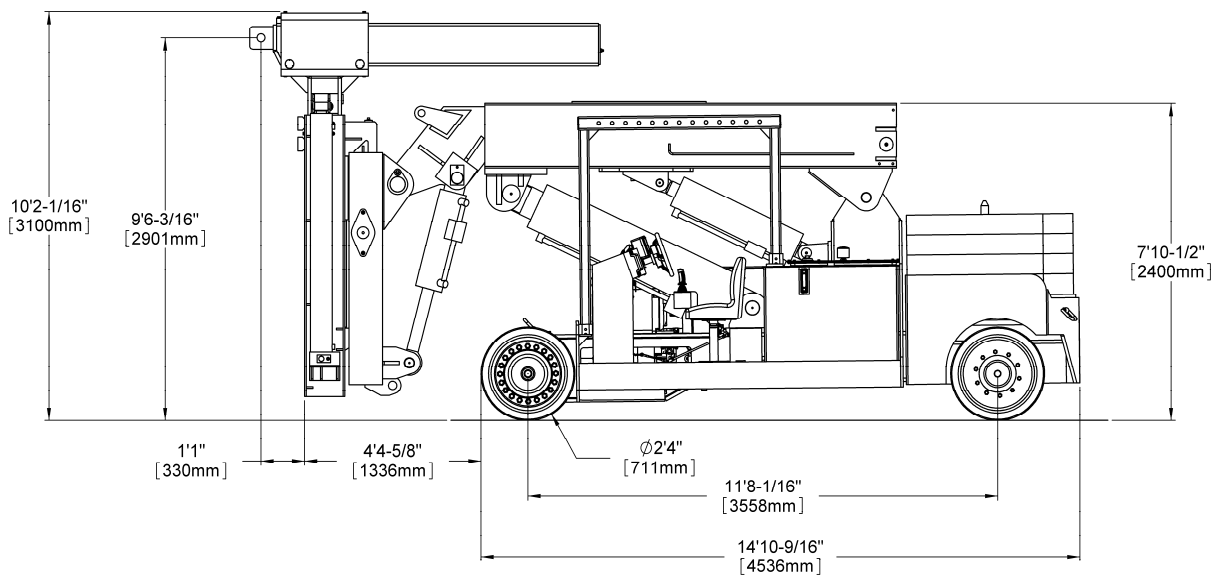




TF45/60

WITH RIGGERS BOOM OPTION

DIMENSIONAL DATA

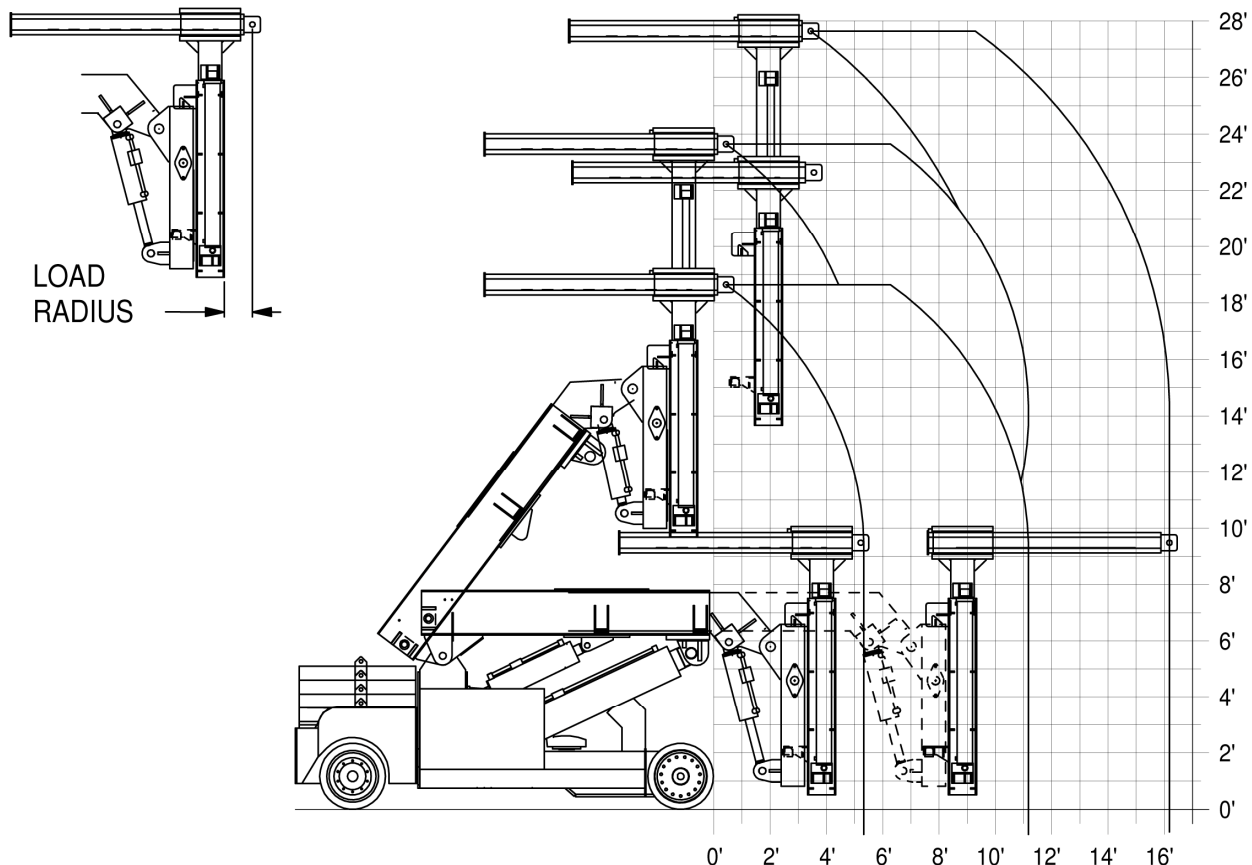




TF45/60

WITH RIGGERS BOOM OPTION

RANGE DIAGRAM / LOAD CHART WITH COUNTERWEIGHT RETRACTED



LOAD RADIUS IN FEET FROM BOOM FACE	TF45/60 LOAD CHART FOR USE WITH RIGGERS BOOM ONLY STANDARD COUNTERWEIGHT COUNTERWEIGHT FULLY RETRACTED					
	POWER BOOM EXTENSION (FEET)					
	0	1	2	3	4	5
1	51,900	43,900	37,900	33,100	29,200	26,000
2	44,800	38,600	33,700	29,800	26,500	23,800
3	39,400	34,400	30,400	27,100	24,300	21,900
4	35,100	31,000	27,600	24,800	22,400	20,300
5	31,600	28,200	25,300	22,900	20,800	18,900
6	28,800	25,800	23,400	21,200	19,400	17,700
6.8	26,600	24,100	21,800	19,900	18,200	16,700
SEE NOTE "D" BELOW						

NOTES:

A) ALL RATINGS ABOVE THE BOLD LINE ARE STABILITY LIMITS. STABILITY IS BASED ON 85% OF TIPPING.

B) ALL RATINGS BELOW THE BOLD LINE ARE BASED ON STRUCTURAL COMPETENCE AND NOT ON MACHINE STABILITY (TIPPING CONDITIONS).

C) ALL CAPACITIES ARE IN POUNDS.

D) TELESCOPE CYLINDER MUST BE FULLY RETRACTED AND AGAINST STOPS.

E) BOOMS TO BE VERTICAL AT ALL TIMES DURING LIFTING.

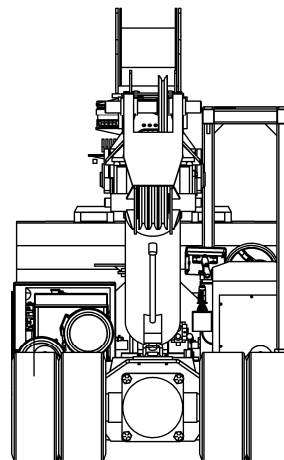
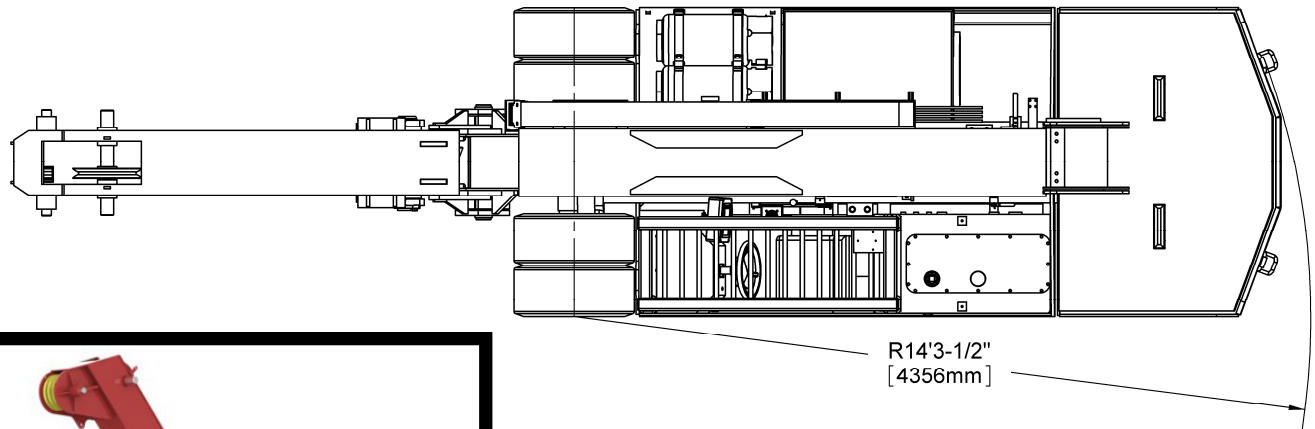
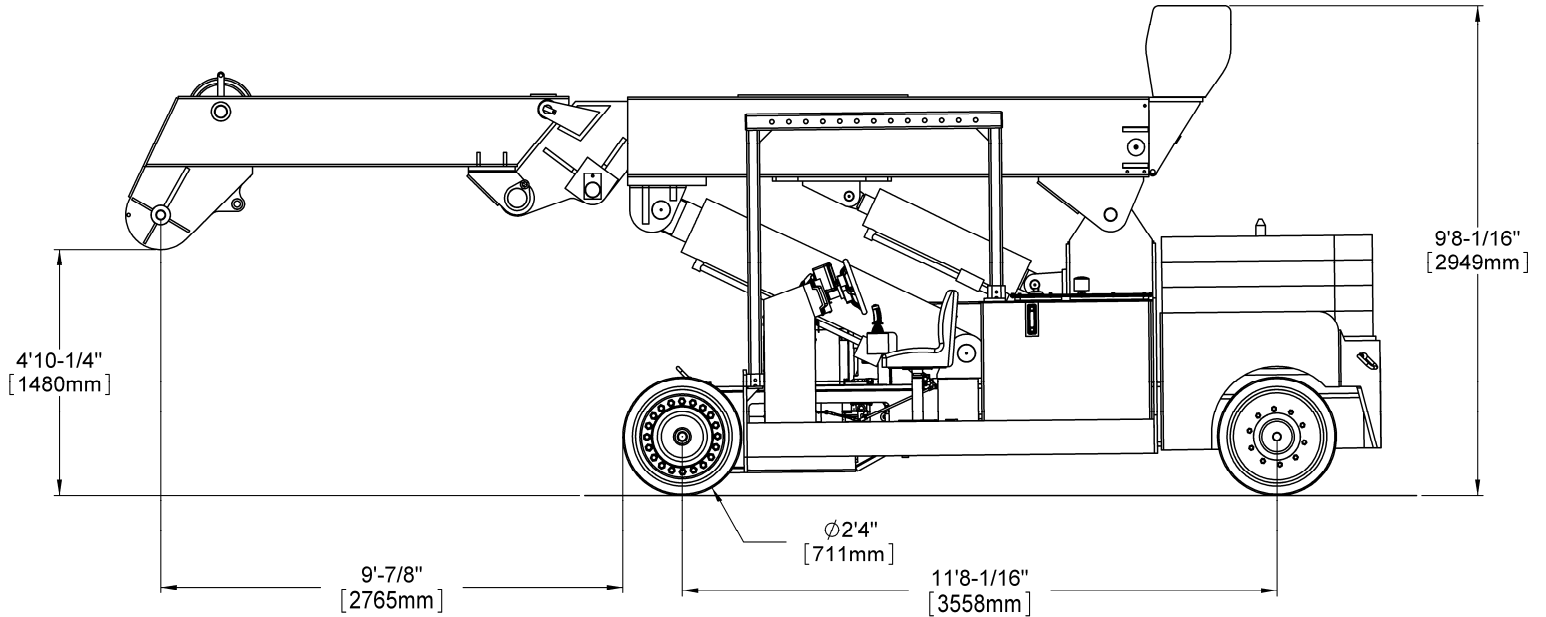
CAUTION!
DO NOT EXTEND OR RETRACT
COUNTERWEIGHT WITH ANY LOAD
SUSPENDED ON HOOK!



TF45/60

WITH MOBILIFT BOOM OPTION

DIMENSIONAL DATA

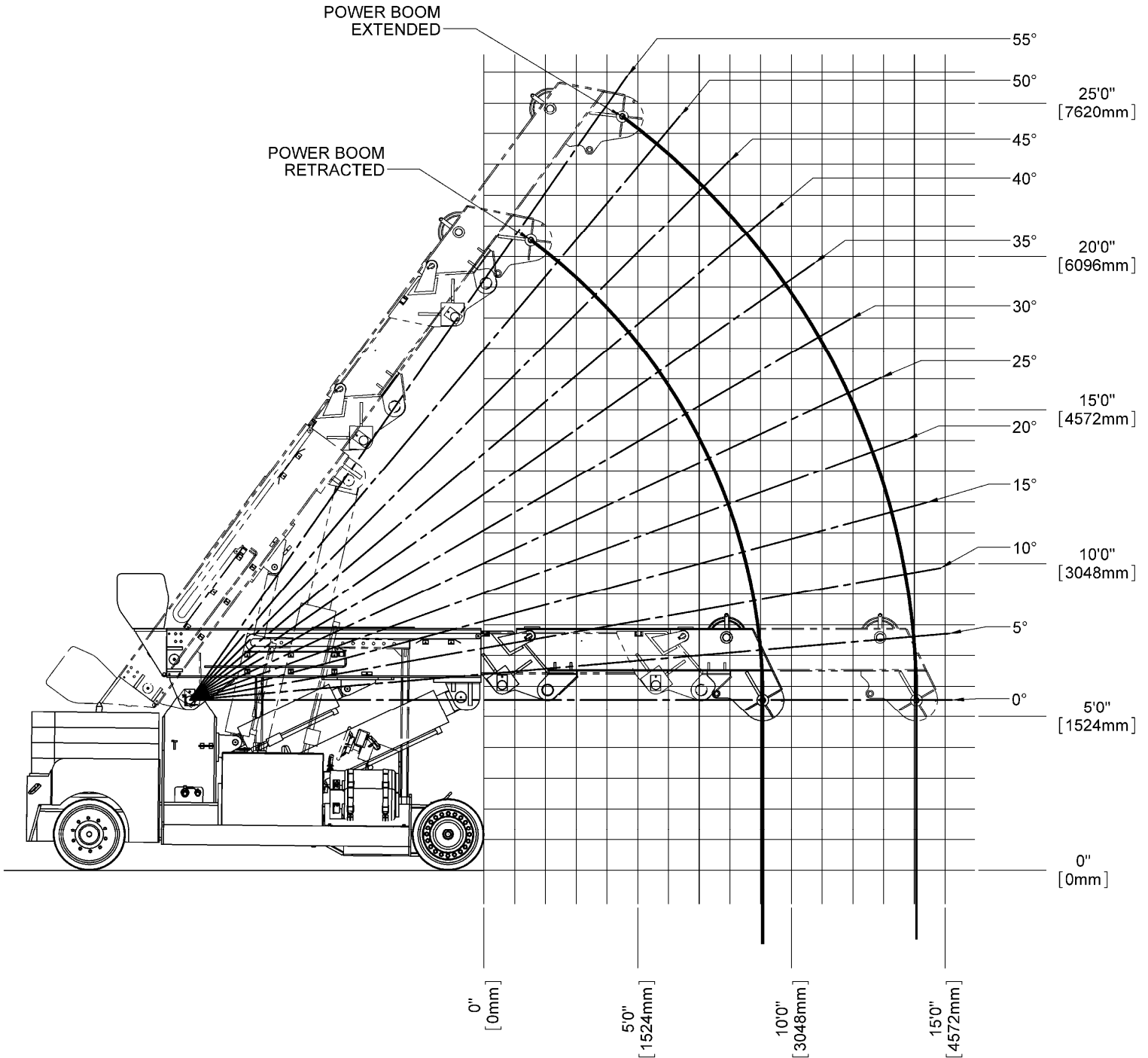




TF45/60

WITH MOBILIFT BOOM OPTION

RANGE DIAGRAM



NOTE

1. The above chart is for reference purposes only.
2. Never use the above chart for lift planning calculations
3. Lift plan calculations are to be determined solely by the load charts and range diagrams that are issued for the specific serial numbered machine that is to be used for the specific planned lift.



TF45/60

WITH MOBILIFT BOOM OPTION

LOAD CHART WITH COUNTERWEIGHT EXTENDED

LOAD RADIUS IN FEET FROM FRONT OF TIRE	TF45/60 LOAD CHART												MLLC083 03282001 REV A
	FOR USE WITH MOBILIFT BOOM AND HOOK BLOCK ONLY STANDARD COUNTERWEIGHT COUNTERWEIGHT FULLY EXTENDED												
	POWER BOOM EXTENSION (FEET)												
	0°	LOADED BOOM ANGLE		LOADED BOOM ANGLE		LOADED BOOM ANGLE		LOADED BOOM ANGLE		LOADED BOOM ANGLE			
		0	1	2	3	4	5	6	7	8	9	10	
2	52	60,000											
3	47	60,000	50	60,000	52	60,000							
4	43	60,000	46	60,000	49	60,000	51	60,000	53	59,100			5
5	38	60,000	42	60,000	45	60,000	48	58,200	50	56,100	52	54,300	
6	33	60,000	37	60,000	41	57,800	44	55,500	46	53,500	49	51,700	
7	27	58,600	32	58,200	36	55,400	40	53,100	43	51,100	45	49,400	
8	19	51,900	26	51,900	31	51,900	36	51,000	39	49,000	42	47,300	
9	0	46,200	19	46,500	26	46,600	31	46,600	35	46,600	38	45,400	
10	SEE NOTE "D" BELOW	0	41,800	18	42,100	25	42,200	30	42,200	34	42,200	34	42,200
11				0	38,200	18	38,400	24	38,500	29	38,500	29	38,500
12						0	35,100	17	35,300	24	35,300	24	35,300
13								0	32,400	17	32,600	17	32,600
14										0	30,100	0	30,100

NOTES:

A) CAPACITIES ABOVE BOLD LINE ARE BASED ON STRUCTURAL COMPETENCE AND NOT STABILITY. (TIPPING CONDITIONS)

B) CAPACITIES BELOW BOLD LINE ARE BASED ON 85% STABILITY LIMITS.

C) ALL CAPACITIES ARE IN POUNDS.

D) TELESCOPE CYLINDER MUST BE FULLY RETRACTED AND AGAINST STOPS.

CAUTION!
DO NOT EXTEND OR RETRACT COUNTERWEIGHT WITH ANY LOAD SUSPENDED ON HOOK OR FORKS!

LOAD CHART WITH COUNTERWEIGHT RETRACTED

LOAD RADIUS IN FEET FROM FRONT OF TIRE	TF45/60 LOAD CHART												MLLC082 03282001 REV A
	FOR USE WITH MOBILIFT BOOM AND HOOK BLOCK ONLY STANDARD COUNTERWEIGHT COUNTERWEIGHT FULLY RETRACTED												
	POWER BOOM EXTENSION (FEET)												
	0°	LOADED BOOM ANGLE		LOADED BOOM ANGLE		LOADED BOOM ANGLE		LOADED BOOM ANGLE		LOADED BOOM ANGLE			
		0	1	2	3	4	5	6	7	8	9	10	
2	52	60,000											
3	47	60,000	50	60,000	52	60,000							
4	43	60,000	46	60,000	49	60,000	51	60,000	53	59,100			5
5	38	60,000	42	60,000	45	60,000	48	58,200	50	56,100	52	54,300	
6	33	51,600	37	51,600	41	51,600	44	51,600	46	51,500	49	51,500	
7	27	45,000	32	45,000	36	45,000	40	45,000	43	44,900	45	44,900	
8	19	39,700	26	39,800	31	39,800	36	39,800	39	39,800	42	39,700	
9	0	35,200	19	35,600	26	35,600	31	35,600	35	35,600	38	35,600	
10	SEE NOTE "D" BELOW	0	31,800	18	32,100	25	32,200	30	32,200	34	32,200	34	32,200
11				0	29,000	18	29,300	24	29,300	29	29,300	29	29,300
12						0	26,600	17	26,800	24	26,900	24	26,900
13								0	24,500	17	24,700	17	24,700
14										0	22,700	0	22,700

NOTES:

A) ALL RATINGS BELOW THE BOLD LINE ARE STABILITY LIMITS. STABILITY IS BASED ON 85% OF TIPPING.

B) ALL RATINGS ABOVE THE BOLD LINE ARE BASED ON STRUCTURAL COMPETENCE AND NOT ON MACHINE STABILITY (TIPPING CONDITIONS).

C) ALL CAPACITIES ARE IN POUNDS.

D) TELESCOPE CYLINDER MUST BE FULLY RETRACTED AND AGAINST STOPS.

CAUTION!
DO NOT EXTEND OR RETRACT COUNTERWEIGHT WITH ANY LOAD SUSPENDED ON HOOK!

LIFT SYSTEMS, INC.

OFFICE:
1505 - 7th Street
East Moline, IL 61244

MAILING ADDRESS:
P.O. Box 906
Moline, IL 61266

TEL: +1-309-764-9842
FAX: +1-309-764-9848
EMAIL: liftit@lift-systems.com
WEB: www.lift-systems.com