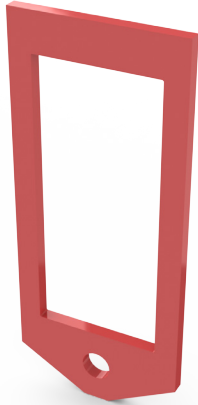




# LIFT LINKS

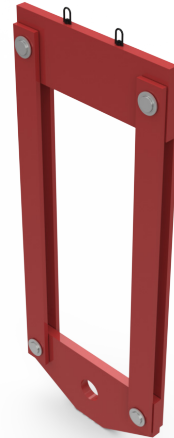
For Hydraulic Gantry Systems

## STANDARD LIFT LINKS



Standard lift links provide the most economical solution to rigging attachment. Simple design yet manufactured with exacting standards. Precision cut with line bored shackle holes.

## MODULAR LIFT LINKS



Modular lift links provide an economical, yet flexible solution for various lifting scenarios. Need a shorter or taller beam opening? Simply change the side plates to accommodate your specific job requirements.

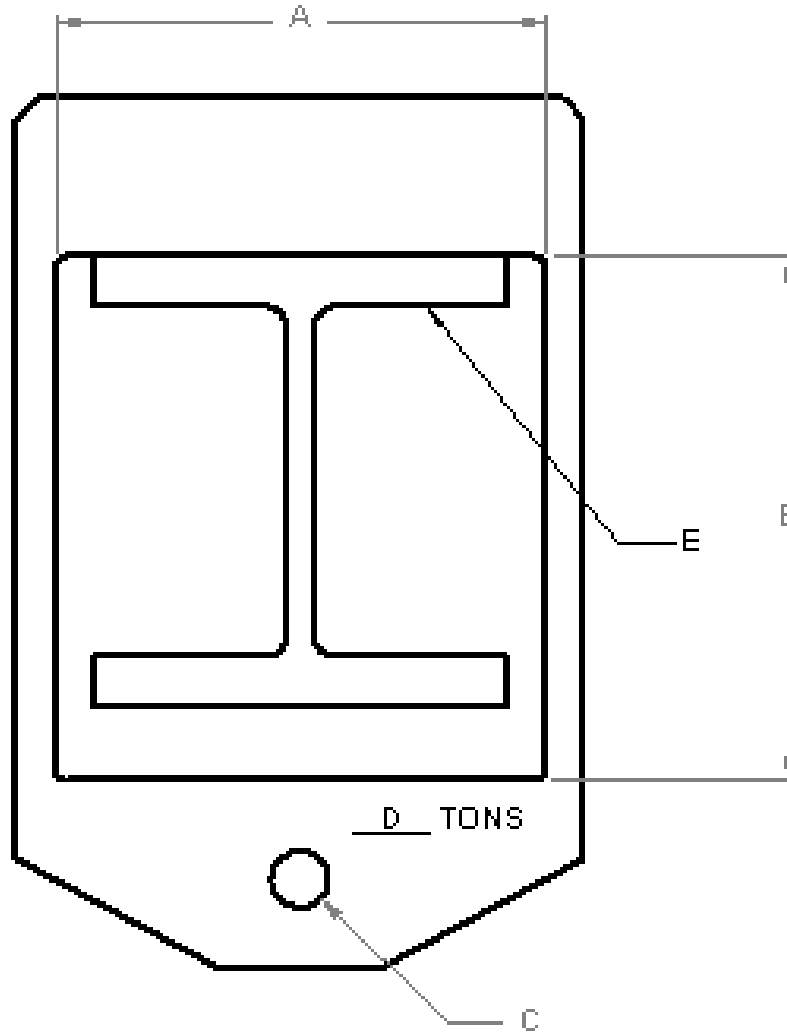
## ADJUSTABLE LIFT LINKS



Adjustable lift links provide site specific flexibility in one complete package. If your company has various beam sizes, beam heights, and side shift systems, adjustable lift links ensure maximum lifting height from your hydraulic gantry system every time. Multiple pin locations can be engineered to suit your specific equipment requirements.



# LINK QUOTATION WORKSHEET



A = width of beam opening \_\_\_\_\_

B = height of beam opening \_\_\_\_\_

C = diameter of shackle pin hole \_\_\_\_\_

D = capacity required per lift link \_\_\_\_\_

E = shape and section size of beam to be used \_\_\_\_\_

## LIFT SYSTEMS, INC.

OFFICE:  
1505 - 7th Street  
East Moline, IL 61244

MAILING ADDRESS:  
P.O. Box 906  
Moline, IL 61266

TEL: +1-309-764-9842  
FAX: +1-309-764-9848  
EMAIL: [liftit@lift-systems.com](mailto:liftit@lift-systems.com)  
WEB: [www.lift-systems.com](http://www.lift-systems.com)