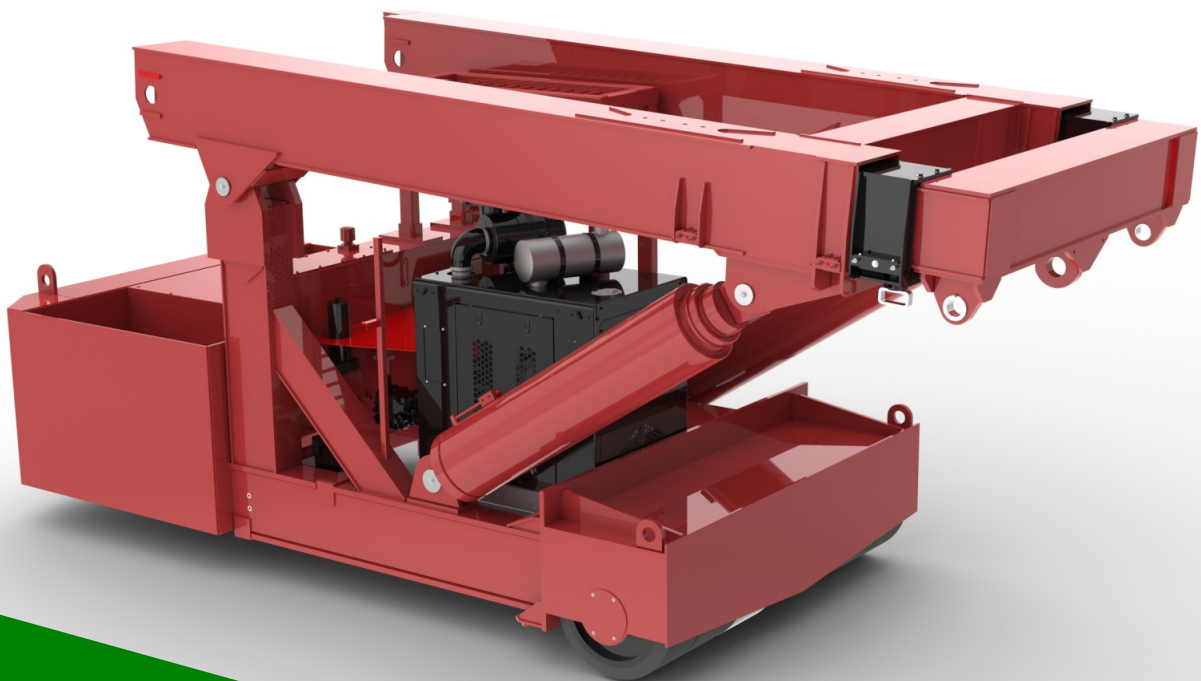




75 TON TWINLIFT

by
LIFT SYSTEMS, INC.



***Global Leaders in Specialized
Lifting Equipment!***



TWINLIFT

75 TON

STANDARD EQUIPMENT

ENGINE:

Cummins Diesel Engine: QSB3.3P
108 hp (81 Kw) intermittent @ 2200 rpm
U.S. EPA Tier 3
CARB Tier 3
EU Stage III
Torque @ 1600 rpm, 306 ft-lbs (415 N-m)

PUMP:

Sundstrand 90 series drive pump

CONTROL SYSTEM:

CARL (Computer Assisted Remote Lifting) Control System.
Monitors Boom Angle, Boom Extension, Pressure, Counterweight Load Pin. Automatic Shutdown for overload conditions. Large easy to read display screen with push button navigation and dial adjustment.

CONTROLS:

Separate controls for each function.
Combination of foot pedal, joystick, and push button controls allows for multiple functions to be performed at the same time.

DRIVE:

Poclain MK35 drive motors (qty. 3)
(2) in front, (1) in rear steering box.

WHEELS:

Front: qty. (4)
Diameter: 28"
Width: (2) @ 16" and (2) @ 10"
Rear: qty. (2)
Diameter: 28"
Width: 16"

Replaceable polyurethane composition

STEERING:

90 degree steering of rear wheels.

OSCILLATING REAR STEERING BOX:

Keeps all steering wheels in contact with ground.

GRADABILITY:

Unloaded maximum grade is 20%
Loaded maximum grade is 10%

GROUND BEARING PRESSURE:

Loaded Front Tires: 360 psi maximum
Unloaded Rear Tires: 440 psi maximum

TRAVEL SPEED UNLOADED:

Travel Mode - High Gear = 0.0 to 1.70 mph
Travel Mode - Low Gear = 0.0 to 0.86 mph
Work Mode - Low Gear = 0.0 to 0.42 mph

TELESCOPING COUNTERWEIGHT:

Standard counterweight section telescopes 5' using (2) hydraulic cylinders. Push button control.

HYDRAULIC RESERVOIR:

140 gallons (530 liters)

BOOM LIFT CYLINDERS:

Twin cylinders capable of lifting and lowering with a full load. Safety holding valves installed on both cylinders. Spherical bearings ensure constant alignment with the boom.

BOOM TELESCOPE CYLINDERS:

Twin cylinders capable of telescoping the boom in and out with a full load. Safety holding valves are installed on both cylinders.

LIFTING EYES:

Qty. (1) centrally located on boom with 75 ton capacity
Qty. (2) located on corners of boom with 37.5 ton capacity each

WINCH MOUNT:

Standard mount for optional winch

WEIGHT:

48,000 lbs.
Standard "A" counterweight included

COUNTERWEIGHTS:

"A" - non-removable counterweight installed in unit
"B" - qty. (2) - 7,300 lbs each. - 14,600 lbs total
"C" - qty. (1) - 8,450 lbs
"D" - qty. (1) - 8,050 lbs

TIE DOWN / LIFTING EYES:

Tie down / lifting eyes installed for securing unit during transport and for lifting of the unit.

DRIVER PROTECTION GUARD:

Structural overhead guard for operator protection.

OTHER STANDARD FEATURES:

Back up alarm, horn, strobe light, operator seat complete with safety belt and electric switch.

OPTIONAL EQUIPMENT

RADIO REMOTE CONTROL:

Radio remote control allows full machine functionality from a wireless radio remote. Allows operator optimal view of load. Emergency safety shutdown switch is standard.

65 TON SPINNER:

Allows for 360 degree rotation of load

HYDRAULIC WINCH:

Consult factory for available capacities

FORKLIFT ATTACHMENT:

Consult factory for available capacities

JIB EXTENSION:

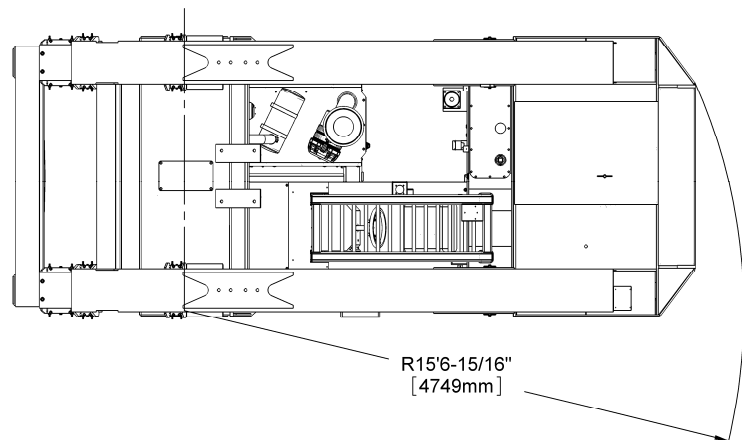
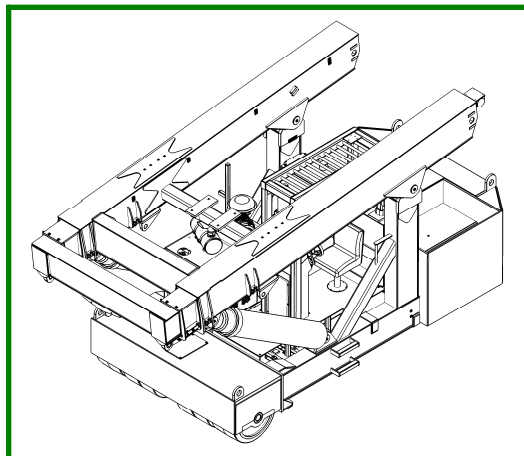
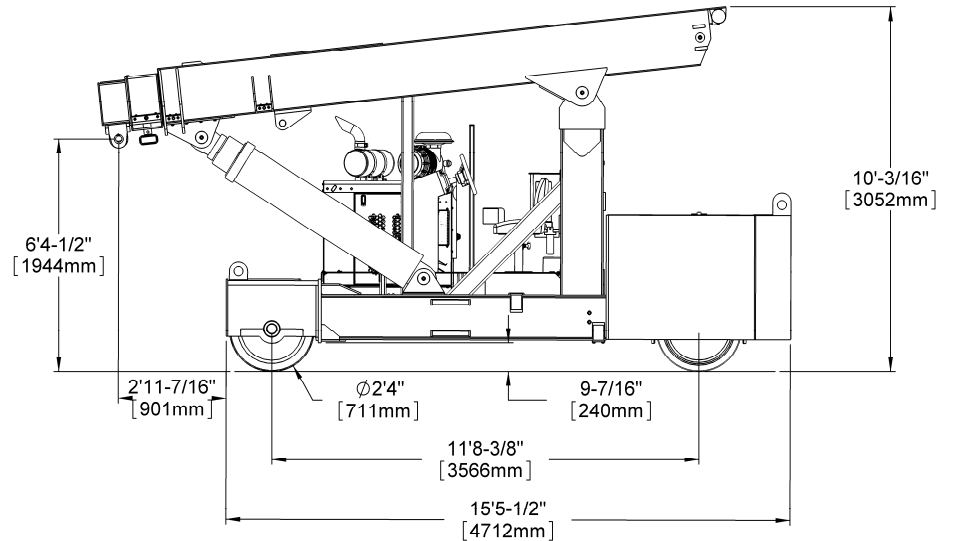
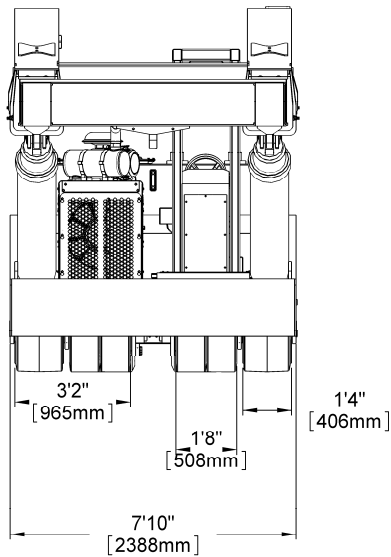
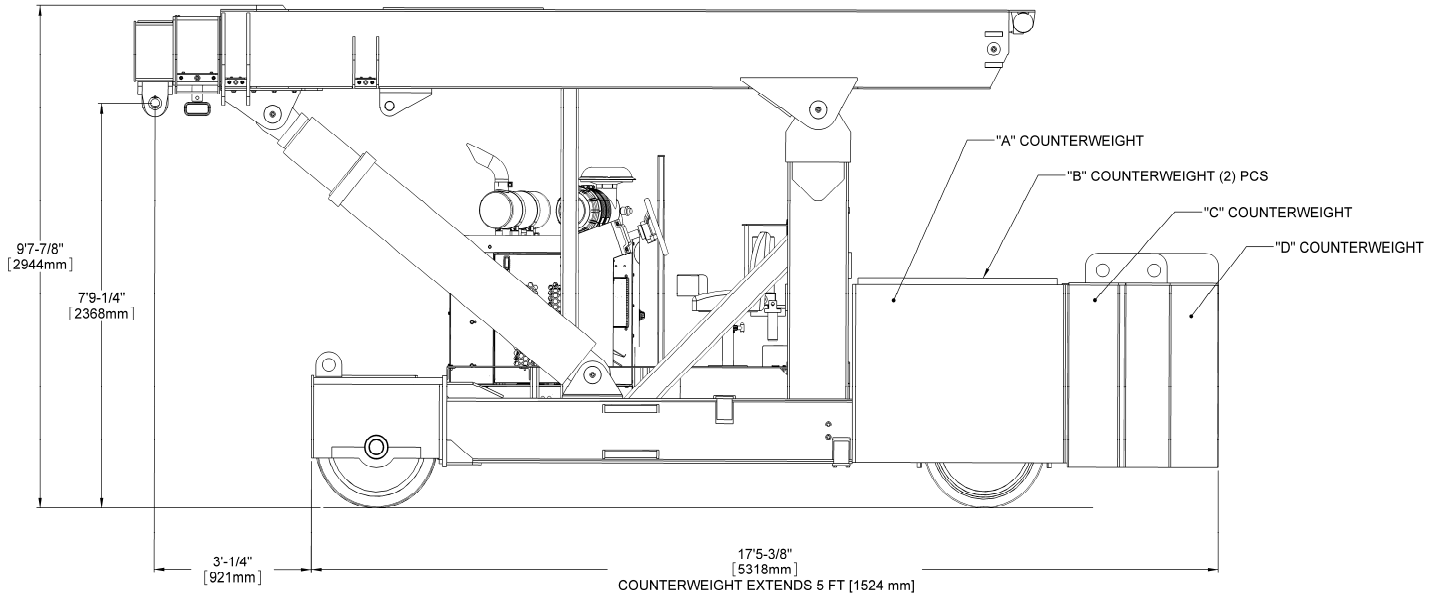
Consult factory for available capacities



TWINLIFT

75 TON

DIMENSIONAL DATA

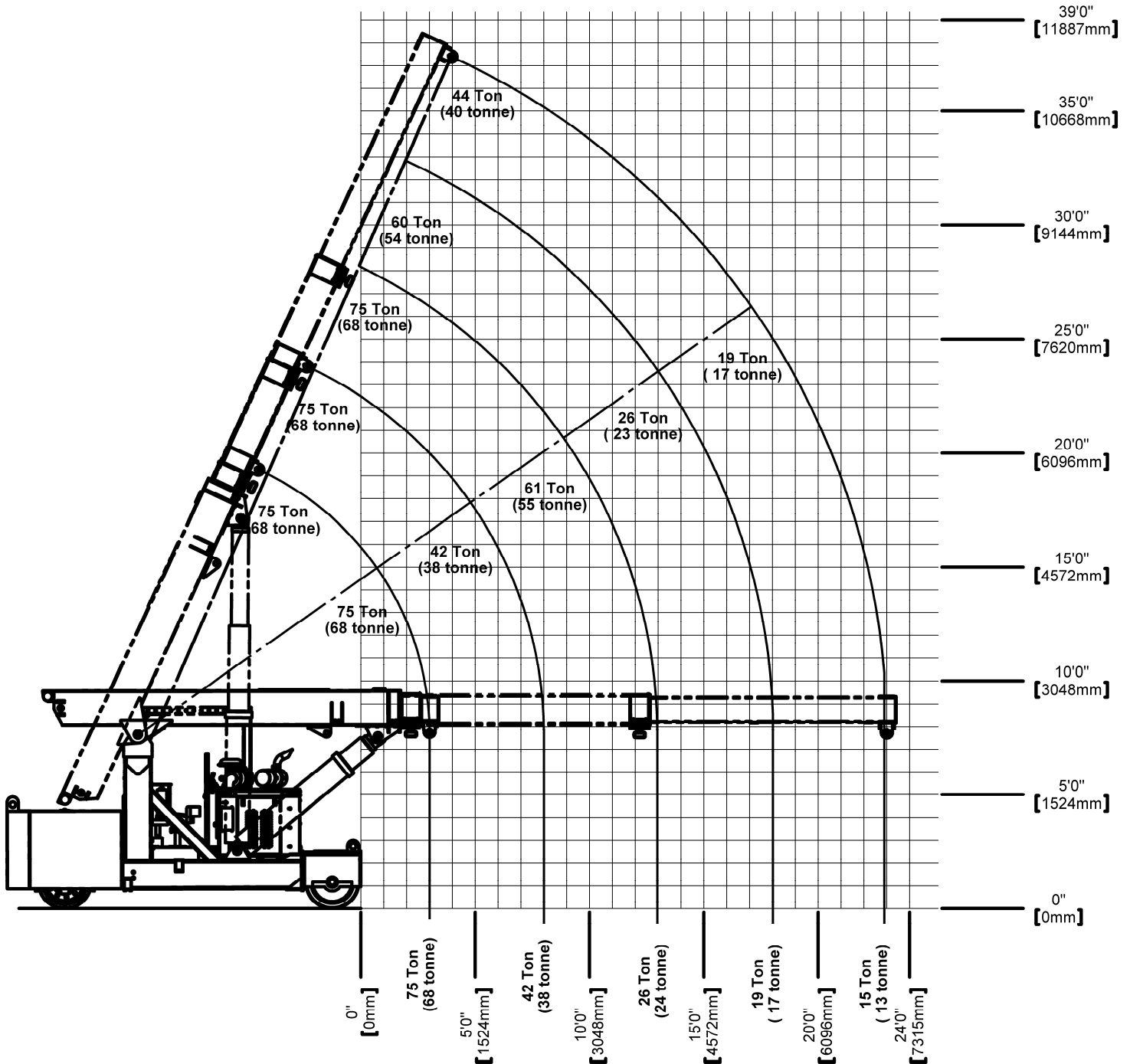




TWINLIFT

75 TON

REFERENCE CAPACITY / RANGE DIAGRAM



NOTE

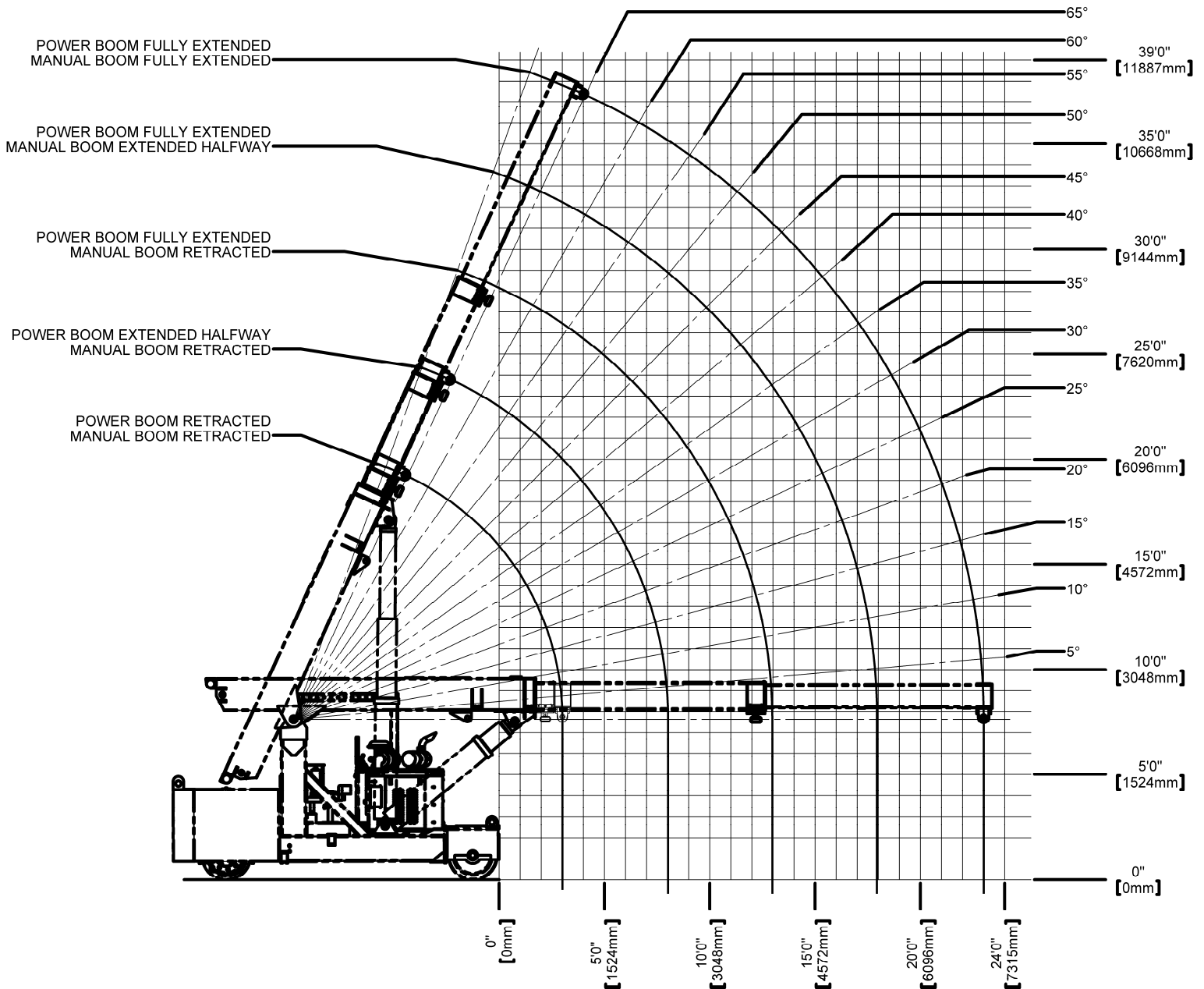
1. The above chart is for reference purposes only.
2. Never use the above chart for lift planning calculations
3. Lift plan calculations are to be determined solely by the load charts and range diagrams that are issued for the specific serial numbered machine that is to be used for the specific planned lift.



TWINLIFT

75 TON

RANGE DIAGRAM



NOTE

1. The above chart is for reference purposes only.
2. Never use the above chart for lift planning calculations
3. Lift plan calculations are to be determined solely by the load charts and range diagrams that are issued for the specific serial numbered machine that is to be used for the specific planned lift.



TWINLIFT

75 TON

LOAD CHARTS FOR "A" COUNTERWEIGHT

LOAD RADIUS (FEET FROM FRONT)	75 TON TWINLIFT LOAD CHART														TLLC100						
	FOR USE WITH LIFTING EYE ONLY STANDARD NON-REMOVABLE "A" COUNTERWEIGHT														10/10/2007						
	FULLY EXTENDED BOOM LENGTH (FEET)							FULLY RETRACTED BOOM LENGTH (FEET)							REV.A						
Δ°	16.5		21.5		26.5		31.5		36.5		Δ°	16.5		21.5		26.5		31.5		36.5	
-4.5	65	150,000									65	150,000									
-4	63	150,000									63	150,000									
-3	57	150,000									57	150,000									
-2	52	150,000	64	150,000							52	150,000	64	150,000							
-1	46	150,000	60	150,000							46	150,000	60	150,000							
0	39	150,000	56	150,000	65	150,000					39	150,000	56	150,000	65	150,000					
1	32	134,700	52	131,600	62	129,900					32	105,000	52	102,000	62	100,200					
2	22	92,900	48	90,500	59	89,200	65	90,500			22	72,200	48	69,900	59	68,500	65	69,900			
3	0	70,700	44	68,600	56	67,500	63	68,600			0	54,900	44	52,800	56	51,600	63	52,800			
4			39	55,000	53	54,000	60	54,900	65	55,600			39	42,100	53	41,100	60	42,100	65	42,800	
5			33	45,600	49	44,800	58	45,600	63	46,200			33	34,800	49	34,000	58	34,800	63	35,400	
6			27	38,900	46	38,100	55	38,900	61	39,400			27	29,600	46	28,700	55	29,600	61	30,100	
7	SEE NOTE "E"		17	33,800	42	33,000	53	33,800	59	34,300	SEE NOTE "E"			17	25,600	42	24,800	53	25,600	59	26,100
7.7			0	30,700									0	23,200							
8					38	29,000	50	29,700	57	30,200					38	21,700	50	22,400	57	22,900	
9					34	25,800	47	26,500	55	27,000					34	19,200	47	19,900	55	20,300	
10					29	23,200	44	23,800	53	24,300					29	17,200	44	17,800	53	18,200	
11					23	21,000	41	21,600	50	22,000					23	15,400	41	16,100	50	16,500	
12					16	19,100	38	19,700	48	20,100					16	14,000	38	14,600	48	15,000	
12.5					0	18,300								0	12,900						
13							35	18,100	46	18,500							35	13,300	46	13,700	
14							31	16,600	43	17,000							31	12,200	43	12,600	
15							26	15,400	41	15,800							26	11,200	41	11,600	
16							21	14,300	38	14,700							21	10,400	38	10,700	
17							15	13,300	35	13,700							15	9,600	35	10,000	
17.5							0	12,900									0	9,300			
18									32	12,800	CAUTION!								32	9,300	
19									28	12,000	DO NOT EXTEND OR RETRACT COUNTERWEIGHT								28	8,700	
20									24	11,300	WITH ANY LOAD SUSPENDED ON HOOK OR FORKS.								24	8,100	
21									20	10,600									20	7,600	
22									14	10,000									14	7,100	
22.5									0	9,800									0	6,900	

LOAD CHARTS FOR "A" AND "B" COUNTERWEIGHT

LOAD RADIUS (FEET FROM FRONT)	75 TON TWINLIFT LOAD CHART														TLLC101						
	FOR USE WITH LIFTING EYE ONLY STANDARD NON-REMOVABLE "A" COUNTERWEIGHT WITH "B" COUNTERWEIGHT ADDED														10/10/2007						
	FULLY EXTENDED BOOM LENGTH (FEET)							FULLY RETRACTED BOOM LENGTH (FEET)							REV.A						
Δ°	16.5		21.5		26.5		31.5		36.5		Δ°	16.5		21.5		26.5		31.5		36.5	
-4.5	65	150,000									65	150,000									
-4	63	150,000									63	150,000									
-3	57	150,000									57	150,000									
-2	52	150,000	64	150,000							52	150,000	64	150,000							
-1	46	150,000	60	150,000							46	150,000	60	150,000							
0	39	150,000	56	150,000	65	150,000					39	150,000	56	150,000	65	150,000					
1	32	150,000	52	150,000	62	150,000					32	150,000	52	150,000	62	150,000					
2	22	150,000	48	150,000	59	148,000	65	120,500			22	115,900	48	113,500	59	112,200	65	113,500			
3	0	118,700	44	116,400	56	115,300	63	114,100			0	88,400	44	86,200	56	85,100	63	86,200			
4			39	93,700	53	92,800	60	93,700	65	89,100			39	69,300	53	68,300	60	69,300	65	69,900	
5			33	78,300	49	77,400	58	78,300	63	78,900			33	57,700	49	56,800	58	57,700	63	58,300	
6			27	67,000	46	66,200	55	67,000	61	67,600			27	49,300	46	48,500	55	49,300	61	49,800	
7	SEE NOTE "E"		17	58,500	42	57,800	53	58,500	59	59,000	SEE NOTE "E"			17	42,900	42	42,100	53	42,900	59	43,400
7.7			0	53,500									0	39,100							
8					38	51,100	50	51,800	57	52,300					38	37,200	50	37,900	57	38,400	
9					34	45,800	47	46,400	55	46,900					34	33,200	47	33,800	55	34,300	
10					29	41,400	44	42,000	53	42,400					29	29,900	44	30,500	53	31,000	
11					23	37,700	41	38,300	50	38,700					23	27,100	41	27,700	50	28,200	
12					16	34,500	38	35,100	48	35,600					16	24,800	38	25,400	48	25,800	
12.5					0	33,200								0	23,800						
13							35	32,400	46	32,800							35	23,400	46	23,800	
14							31	30,100	43	30,500							31	21,600	43	22,000	
15							26	28,000	41	28,400							26	20,000	41	20,400	
16							21	26,200	38	26,500							21	18,700	38	19,100	
17							15	24,500	35	24,900							15	17,500	35	17,800	
17.5							0	23,800									0	16,900			
18									32	23,400	CAUTION!								32	16,700	
19									28	22,100	DO NOT EXTEND OR RETRACT COUNTERWEIGHT								28	15,700	
20									24	20,900	WITH ANY LOAD SUSPENDED ON HOOK OR FORKS.								24	14,800	
21									20	19,800									20	14,000	
22									14	18,800									14	13,300	
22.5									0	18,400									0	12,900	

NOTE: Specifications are provided in metric dimensions. All equipment dimensions, designs, specifications, calculations, etc., as described, are subject to change at manufacturer's discretion at any time and without notice. Weights are approximate and may vary. Data herein is for informational purposes only and will not be construed to guarantee suitability of equipment for any particular as performance may vary with conditions encountered. Warranty will apply as written in standard contract form upon purchase of equipment. Capacities are for reference only and must not be used for any serial numbered machine. Serial numbered load charts may be obtained from Lift Systems, Inc.



TWINLIFT

75 TON

LOAD CHARTS FOR "A", "B", AND "C" COUNTERWEIGHT

LOAD RADIUS (FEET FROM FRONT)	75 TON TWINLIFT LOAD CHART																		TLLC102
	FOR USE WITH LIFTING EYE ONLY																		10/10/2007
	STANDARD NON-REMOVABLE "A" COUNTERWEIGHT WITH "B", "C" COUNTERWEIGHT ADDED																		REV.A
Δ°	FULLY EXTENDED BOOM LENGTH (FEET)									FULLY RETRACTED BOOM LENGTH (FEET)									MANUAL FLY SECTION SEE NOTES
	16.5	21.5		26.5		31.5		36.5		16.5	21.5		26.5		31.5		36.5		
-4.5	65	150,000								65	150,000								
-4	63	150,000								63	150,000								
-3	57	150,000								57	150,000								
-2	52	150,000	64	150,000						52	150,000	64	150,000						
-1	46	150,000	60	150,000						46	150,000	60	150,000						
0	39	150,000	56	150,000	65	150,000				39	150,000	56	150,000	65	150,000				
1	32	150,000	52	150,000	62	150,000				32	150,000	52	150,000	62	150,000				
2	22	150,000	48	150,000	59	148,000	65	120,500		22	147,700	48	145,400	59	144,100	65	120,500		
3	0	150,000	44	149,300	56	140,400	63	114,100		0	112,900	44	110,700	56	109,600	63	110,700		
4			39	120,400	53	119,400	60	108,400	65	89,100		39	89,100	53	88,100	60	89,100	65	89,100
5			33	100,700	49	99,800	58	100,700	63	85,400		33	74,400	49	73,500	58	74,400	63	75,000
6			27	86,400	46	85,500	55	86,300	61	81,900		27	63,700	46	62,900	55	63,700	61	64,200
7	SEE NOTE "E"		17	75,500	42	74,700	53	75,500	59	76,000		17	55,600	42	54,800	53	55,500	59	56,100
7.7			0	69,100								0	50,700						
8					38	66,300	50	67,000	57	67,500				38	48,500	50	49,200	57	49,700
9					34	59,400	47	60,100	55	60,600				34	43,400	47	44,000	55	44,500
10					29	53,800	44	54,500	53	54,900				29	39,200	44	39,800	53	40,300
11					23	49,100	41	49,700	50	50,200				23	35,700	41	36,300	50	36,700
12					16	45,100	38	45,700	48	46,200				16	32,700	38	33,300	48	33,700
12.5					0	43,400								0	31,400				
13							35	42,300	46	42,700						35	30,700	46	31,100
14							31	39,300	43	39,700						31	28,500	43	28,900
15							26	36,600	41	37,000						26	26,500	41	26,900
16							21	34,300	38	34,700						21	24,800	38	25,100
17							15	32,200	35	32,600						15	23,200	35	23,600
17.5							0	31,300								0	22,500		
18									32	30,700								32	22,200
19									28	29,100								28	20,900
20									24	27,500								24	19,800
21									20	26,200								20	18,700
22									14	24,900								14	17,800
22.5									0	24,300								0	17,400

LOAD CHARTS FOR "A", "B", "C", AND "D" COUNTERWEIGHT

LOAD RADIUS (FEET FROM FRONT)	75 TON TWINLIFT LOAD CHART																		TLLC103
	FOR USE WITH LIFTING EYE ONLY																		10/10/2007
	STANDARD NON-REMOVABLE "A" COUNTERWEIGHT WITH "B", "C", "D" COUNTERWEIGHT ADDED																		REV.A
Δ°	FULLY EXTENDED BOOM LENGTH (FEET)									FULLY RETRACTED BOOM LENGTH (FEET)									MANUAL FLY SECTION SEE NOTES
	16.5	21.5		26.5		31.5		36.5		16.5	21.5		26.5		31.5		36.5		
-4.5	65	150,000								65	150,000								
-4	63	150,000								63	150,000								
-3	57	150,000								57	150,000								
-2	52	150,000	64	150,000						52	150,000	64	150,000						
-1	46	150,000	60	150,000						46	150,000	60	150,000						
0	39	150,000	56	150,000	65	150,000				39	150,000	56	150,000	65	150,000				
1	32	150,000	52	150,000	62	150,000				32	150,000	52	150,000	62	150,000				
2	22	150,000	48	150,000	59	148,000	65	120,500		22	150,000	48	150,000	59	148,000	65	120,500		
3	0	150,000	44	150,000	56	140,400	63	114,100		0	137,800	44	135,500	56	134,400	63	114,100		
4			39	147,000	53	133,700	60	108,400	65	89,100		39	109,200	53	108,300	60	108,400	65	89,100
5			33	123,000	49	122,200	58	103,200	63	85,400		33	91,300	49	90,400	58	91,300	63	85,400
6			27	105,700	46	104,900	55	88,700	61	81,900		27	78,300	46	77,500	55	78,300	61	78,800
7	SEE NOTE "E"		17	92,500	42	91,700	53	92,500	59	76,300		17	68,400	42	67,600	53	68,400	59	68,900
7.7			0	84,600								0	62,500						
8					38	81,400	50	82,100	57	73,600				38	59,900	50	60,600	57	61,100
9					34	73,100	47	73,800	55	71,100				34	53,700	47	54,400	55	54,900
10					29	66,300	44	66,900	53	67,400				29	48,600	44	49,300	53	49,700
11					23	60,600	41	61,200	50	61,600				23	44,300	41	45,000	50	45,400
12					16	55,700	38	56,300	48	56,700				16	40,700	38	41,300	48	41,700
12.5					0	53,600								0	39,100				
13							35	52,100	46	52,500						35	38,200	46	38,600
14							31	48,500	43	48,900						31	35,400	43	35,800
15							26	45,300	41	45,700						26	33,000	41	33,400
16							21	42,500	38	42,800						21	30,900	38	31,300
17							15	39,900	35	40,300						15	29,000	35	29,400
17.5							0	38,800								0	28,200		
18									32	38,000								32	27,700
19									28	36,000								28	26,200
20									24	34,200								24	24,800
21									20	32,500								20	23,500
22									14	30,900								14	22,400
22.5									0	30,200								0	21,800

LIFT SYSTEMS, INC.

OFFICE:
1505 - 7th Street
East Moline, IL 61244

MAILING ADDRESS:
P.O. Box 906
Moline, IL 61266

TEL: +1-309-764-9842
FAX: +1-309-764-9848
EMAIL: liftit@lift-systems.com
WEB: www.lift-systems.com