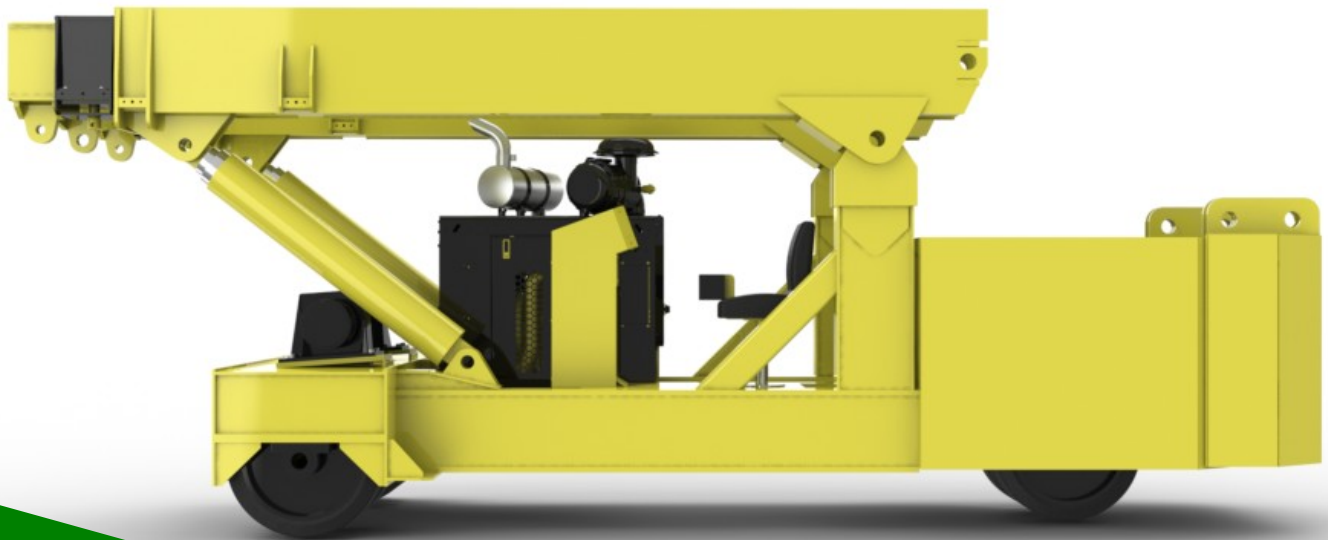




# 36 TONNE TWINLIFT

by  
LIFT SYSTEMS, INC.



***Global Leaders in Specialized  
Lifting Equipment!***



# TWINLIFT

## 36 TONNE

### STANDARD EQUIPMENT

**ENGINE:**

GM Industrial 4.3L Propane Engine  
78 kW (105 hp)  
U.S. EPA Tier 3  
CARB Tier 3  
EU Stage III

**CONTROL SYSTEM:**

CARL (Computer Assisted Remote Lifting) Control System. Monitors Boom Angle, Boom Extension, Counterweight Extension, Pressure, Counterweight Load Pin. Automatic Shutdown for overload conditions. Large easy to read display screen with push button navigation and dial adjustment.

**CONTROLS:**

Separate controls for each function. Combination of foot pedal, joystick, and push button controls allows for multiple functions to be performed at the same time.

**DRIVE:**

Brevini drive motors (qty. 3)  
(2) in front, (1) in rear steering box.

**WHEELS:**

**Front:** qty. (4)  
Diameter: 711 mm  
Width: 254 mm  
**Rear:** qty. (2)  
Diameter: 711 mm  
Width: 254 mm  
Replaceable polyurethane composition

**STEERING:**

90 degree steering of rear wheels.

**OSCILLATING REAR STEERING BOX:**

Keeps all steering wheels in contact with ground.

**GRADABILITY:**

Unloaded maximum grade is 17%  
Loaded maximum grade is 3.5%

**GROUND BEARING PRESSURE:**

Loaded Front Tires: 54.85 kg/cm<sup>2</sup>  
Unloaded Rear Tires: 46.41 kg/cm<sup>2</sup>

**TELESCOPING COUNTERWEIGHT:**

Standard counterweight section telescopes 1524 mm using (2) hydraulic cylinders. Push button control.

**HYDRAULIC RESERVOIR:**

378 liters (100 gallons)

**BOOM LIFT CYLINDERS:**

Twin cylinders capable of lifting and lowering with a full load. Safety holding valves installed on both cylinders. Spherical bearings ensure constant alignment with the boom.

**BOOM TELESCOPE CYLINDERS:**

Twin cylinders capable of telescoping the boom in and out with a full load. Safety holding valves are installed on both cylinders.

**LIFTING EYES:**

Qty. (1) centrally located on boom with 36 tonne capacity  
Qty. (2) located on corners of boom with 18 tonne capacity each

**WINCH MOUNT:**

Standard mount for optional winch

**WEIGHT:**

16,344 kg  
Standard "A" counterweight included

**COUNTERWEIGHTS:**

"A" - non-removable counterweight installed in unit  
"B" - qty. (2) - 2,202 kg each. - 4,404 kg total  
"C" - qty. (1) - 3,859 kg

**TIE DOWN / LIFTING EYES:**

Tie down / lifting eyes installed for securing unit during transport and for lifting of the unit.

**DRIVER PROTECTION GUARD:**

Structural overhead guard for operator protection.

**OTHER STANDARD FEATURES:**

Back up alarm, horn, strobe light, operator seat complete with safety belt and electric switch.

### OPTIONAL EQUIPMENT

**RADIO REMOTE CONTROL:**

Radio remote control allows full machine functionality from a wireless radio remote. Allows operator optimal view of load. Emergency safety shutdown switch is standard.

**HYDRAULIC WINCH:**

Consult factory for available capacities

**FORKLIFT ATTACHMENT:**

Consult factory for available capacities

**JIB EXTENSION:**

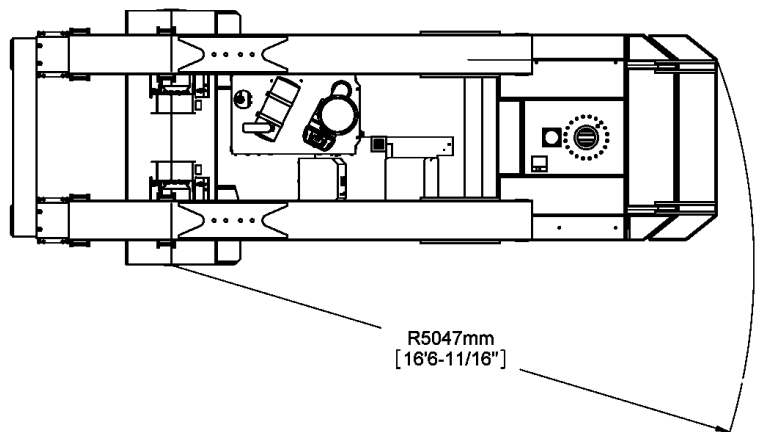
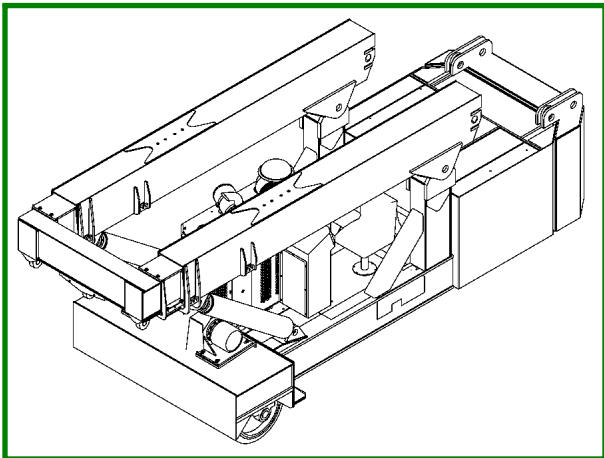
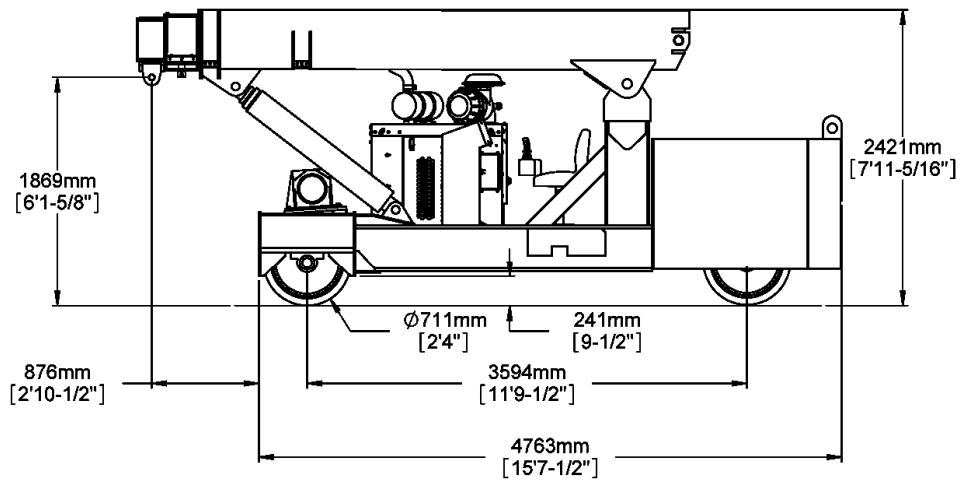
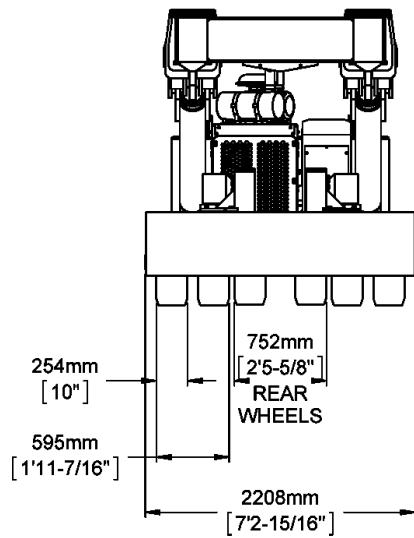
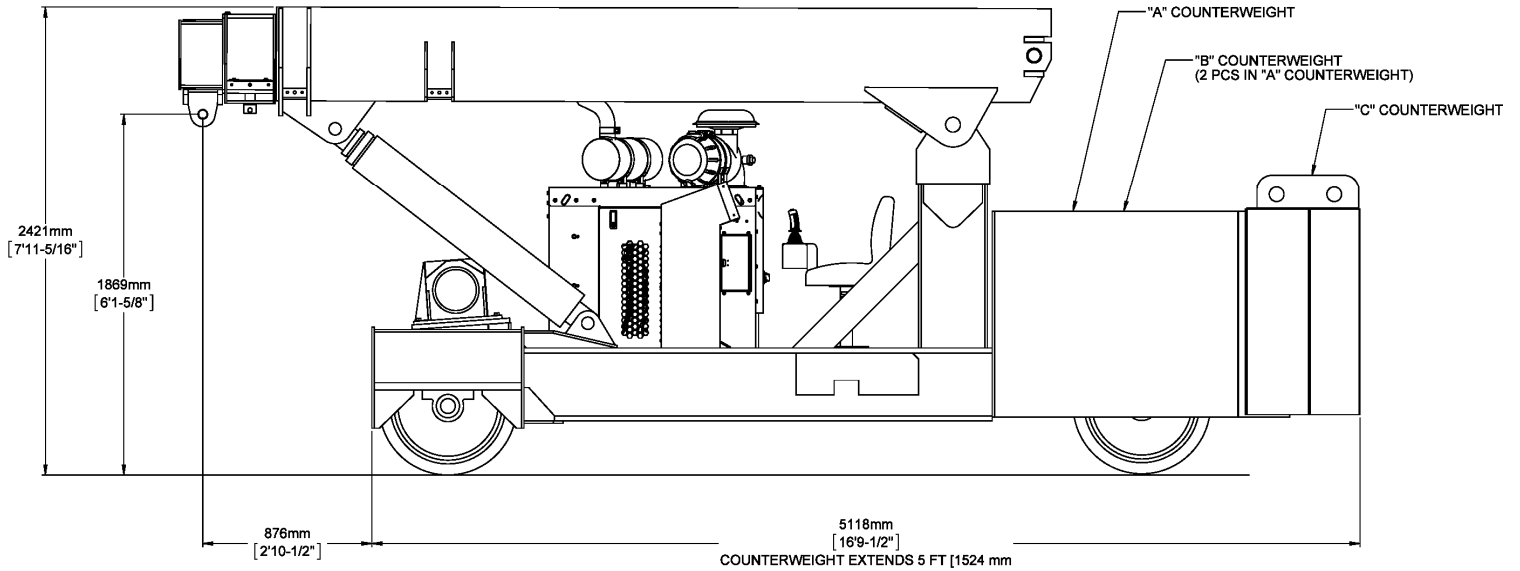
Consult factory for available capacities



# TWINLIFT

## 36 TONNE

### DIMENSIONAL DATA

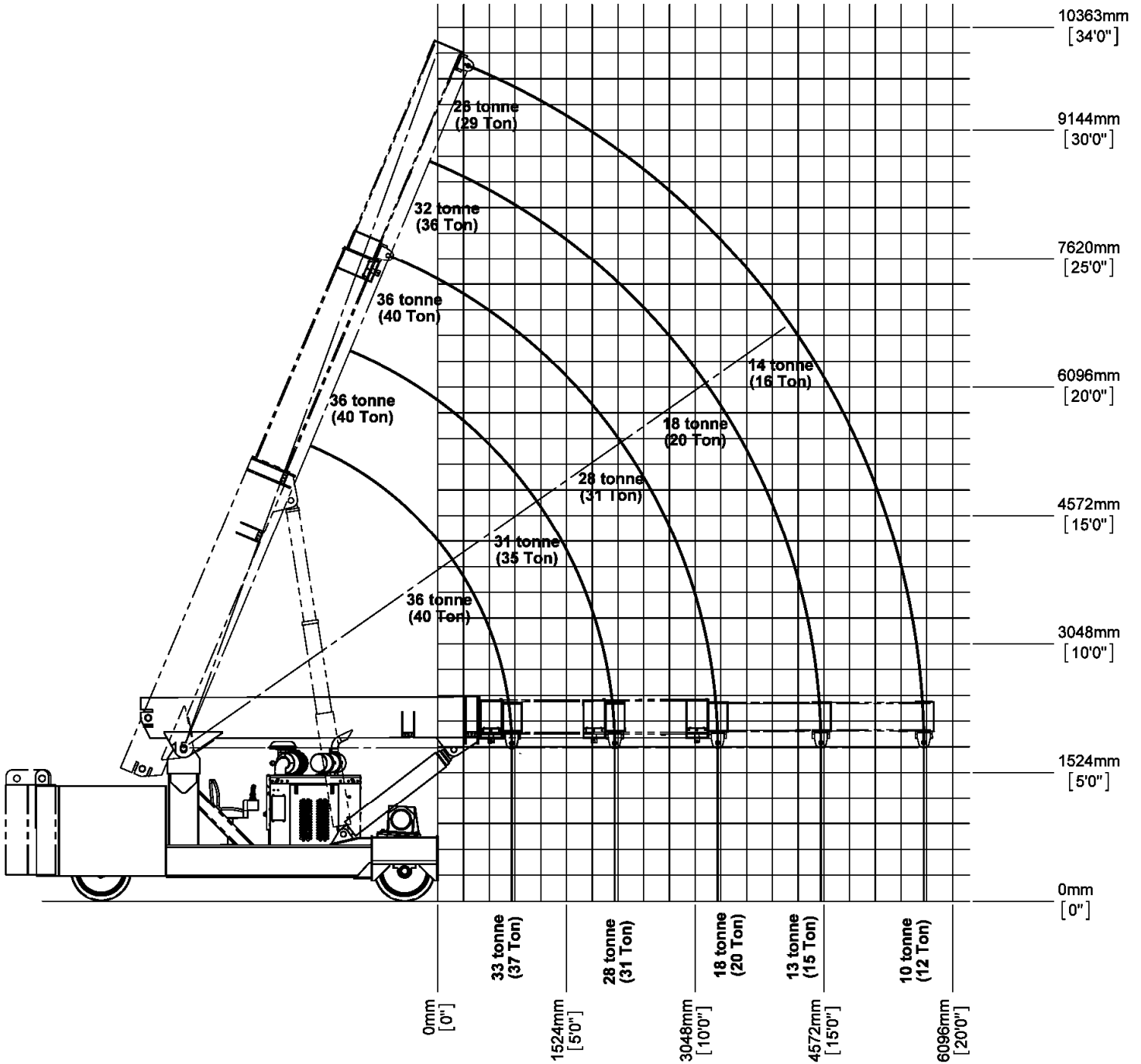




# TWINLIFT

## 36 TONNE

### REFERENCE CAPACITY / RANGE DIAGRAM



#### NOTE

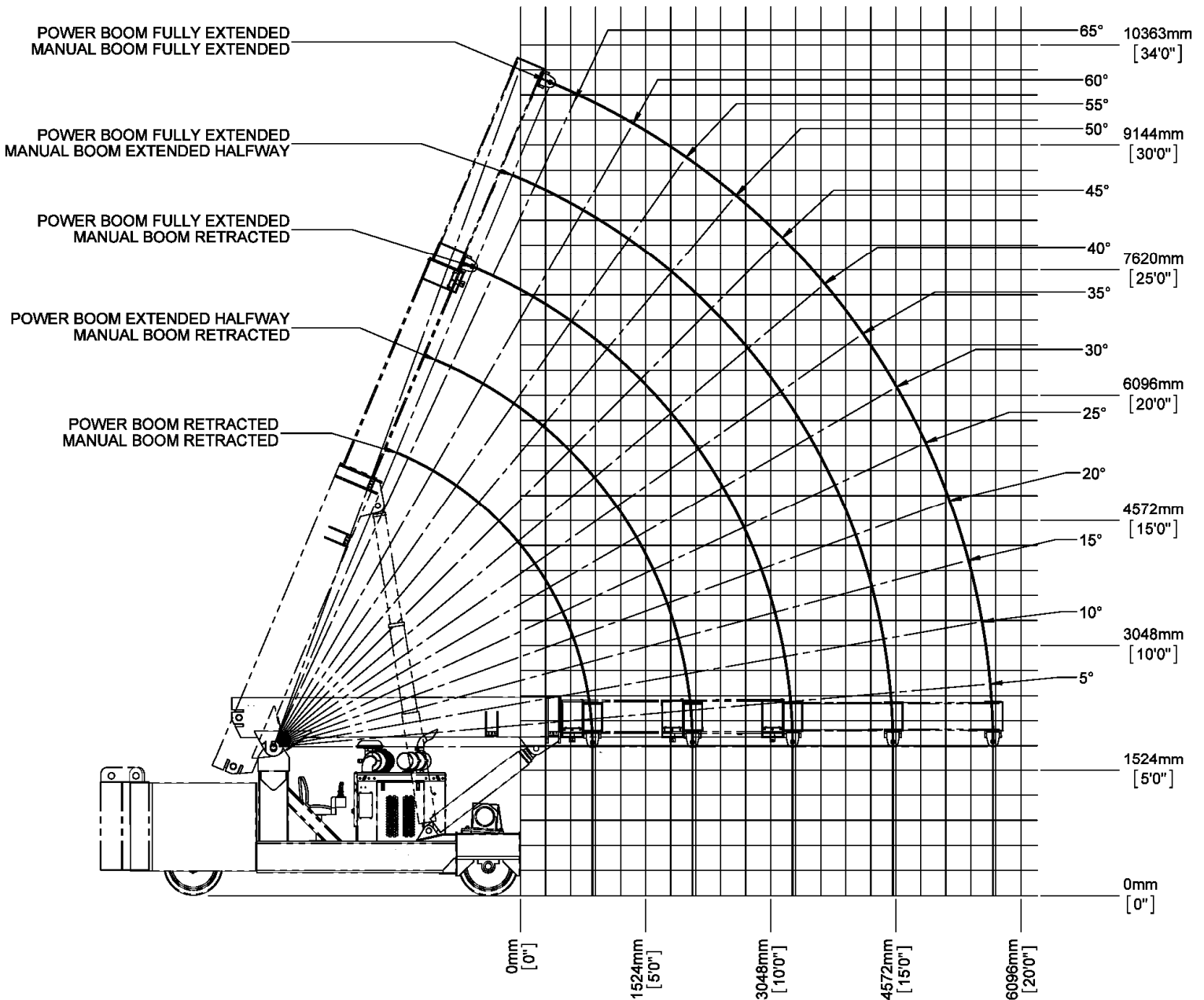
1. The above chart is for reference purposes only.
2. Never use the above chart for lift planning calculations
3. Lift plan calculations are to be determined solely by the load charts and range diagrams that are issued for the specific serial numbered machine that is to be used for the specific planned lift.



# TWINLIFT

## 36 TONNE

### RANGE DIAGRAM



#### NOTE

1. The above chart is for reference purposes only.
2. Never use the above chart for lift planning calculations
3. Lift plan calculations are to be determined solely by the load charts and range diagrams that are issued for the specific serial numbered machine that is to be used for the specific planned lift.



# TWINLIFT

## 36 TONNE

### LOAD CHARTS FOR "A" COUNTERWEIGHT

LOAD RADIUS (METERS FROM FRONT)	36 TONNE TWINLIFT LOAD CHART										TLLC119			
	FULLY EXTENDED					FULLY RETRACTED					7/27/2011			
	LOADED BOOM ANGLE	BOOM LENGTH (METERS)				LOADED BOOM ANGLE	BOOM LENGTH (METERS)				FLY SECTION SEE NOTES			
	△°	3.96	5.18	6.40	7.62	8.84	△°	3.96	5.18	6.40	7.62	8.84	FLY SECTION SEE NOTES	
0.00	42	36,200	55	36,200	60	36,200	42	36,200	55	36,200	60	36,200		
0.30	35	36,200	51	36,200	60	36,200	35	36,200	51	36,200	60	36,200		
0.61	26	35,500	47	35,400	56	35,300	26	29,000	47	28,400	56	28,100		
0.91	13	28,700	42	28,200	53	27,900	13	21,900	42	21,500	53	21,100		
1.22			38	22,500	49	22,300			38	17,100	49	16,800	60	21,600
1.52			30	18,700	46	18,500			30	14,100	46	13,900	57	17,200
1.83			23	15,900	42	15,700			23	11,900	42	11,700	60	14,500
2.13			11	13,800	38	13,600			11	10,300	38	10,100	57	12,300
2.44					33	11,900					33	8,800	45	8,100
2.74					27	10,800					27	7,800	42	6,100
3.05	SEE NOTE "E"				21	9,500					21	6,900	38	7,200
3.35					10	8,600					10	6,300	34	6,500
3.66					30	8,100					30	5,900	42	6,700
3.96					25	7,400					25	5,300	39	5,500
4.27					19	6,800					19	4,900	35	5,100
4.57					10	6,300					10	4,500	32	4,700
4.88													28	4,300
5.18													23	4,000
5.49													17	3,700
5.79													9	3,400

NOTES:  
 A) FLY SECTION CAPACITIES ARE LIMITED BY ANGLE. DO NOT USE LOAD RADIUS WHEN USING FLY SECTION.  
 B) RATINGS ABOVE THE BOLD LINE ARE BASED ON THE MACHINE'S HYDRAULIC OR STRUCTURAL STRENGTH AND NOT STABILITY.  
 C) RATINGS BELOW THE BOLD LINE ARE BASED ON 85% OF TIPPING.  
 D) ALL CAPACITIES ARE IN KILOGRAMS.  
 E) TELESCOPE CYLINDERS MUST BE FULLY RETRACTED AND AGAINST STOPS.  
 F) BOOM LENGTH IS FROM REAR OF BOOM TO CENTER OF LIFT EYE.

CAUTION!  
 DO NOT EXTEND OR RETRACT COUNTERWEIGHT WITH ANY LOAD SUSPENDED ON HOOK OR FORKS.

### LOAD CHARTS FOR "A" AND "B" COUNTERWEIGHT

LOAD RADIUS (METERS FROM FRONT)	36 TONNE TWINLIFT LOAD CHART										TLLC120			
	FULLY EXTENDED					FULLY RETRACTED					7/27/2011			
	LOADED BOOM ANGLE	BOOM LENGTH (METERS)				LOADED BOOM ANGLE	BOOM LENGTH (METERS)				FLY SECTION SEE NOTES			
	△°	3.96	5.18	6.40	7.62	8.84	△°	3.96	5.18	6.40	7.62	8.84	FLY SECTION SEE NOTES	
0.00	42	36,200	55	36,200	60	36,200	42	36,200	55	36,200	60	36,200		
0.30	35	36,200	51	36,200	60	36,200	35	36,200	51	36,100	60	36,000		
0.61	26	35,400	47	35,200	56	35,200	26	33,600	47	33,500	56	33,400		
0.91	13	33,600	42	33,400	53	33,400	13	31,200	42	30,700	53	30,400		
1.22			38	31,800	49	31,700			38	24,800	49	24,400	60	30,900
1.52			30	28,000	46	27,800			30	20,400	46	20,200	57	24,700
1.83			23	23,900	42	23,700			23	17,400	42	17,200	60	20,800
2.13			11	20,900	38	20,600			11	15,100	38	14,900	57	17,700
2.44					33	18,200					33	13,100	45	13,400
2.74					27	16,300					27	11,700	42	11,900
3.05	SEE NOTE "E"				21	14,700					21	10,500	38	10,700
3.35					10	13,400					10	9,500	34	9,700
3.66					30	12,500					30	8,900	42	9,100
3.96					25	11,500					25	8,200	39	8,300
4.27					19	10,600					19	7,800	35	7,700
4.57					10	9,900					10	6,900	32	7,100
4.88													28	6,600
5.18													23	6,200
5.49													17	5,800
5.79													9	5,400

NOTES:  
 A) FLY SECTION CAPACITIES ARE LIMITED BY ANGLE. DO NOT USE LOAD RADIUS WHEN USING FLY SECTION.  
 B) RATINGS ABOVE THE BOLD LINE ARE BASED ON THE MACHINE'S HYDRAULIC OR STRUCTURAL STRENGTH AND NOT STABILITY.  
 C) RATINGS BELOW THE BOLD LINE ARE BASED ON 85% OF TIPPING.  
 D) ALL CAPACITIES ARE IN KILOGRAMS.  
 E) TELESCOPE CYLINDERS MUST BE FULLY RETRACTED AND AGAINST STOPS.  
 F) BOOM LENGTH IS FROM REAR OF BOOM TO CENTER OF LIFT EYE.

CAUTION!  
 DO NOT EXTEND OR RETRACT COUNTERWEIGHT WITH ANY LOAD SUSPENDED ON HOOK OR FORKS.

NOTE:

Specifications are provided in metric dimensions. All equipment dimensions, designs, specifications, calculations, etc., as described, are subject to change at manufacturer's discretion at any time and without notice. Weights are approximate and may vary. Data herein is for informational purposes only and will not be construed to guarantee suitability of equipment for any particular as performance may vary with conditions encountered. Warranty will apply as written in standard contract form upon purchase of equipment. Capacities are for reference only and must not be used for any serial numbered machine. Serial numbered load charts may be obtained from Lift Systems, Inc.



# TWINLIFT

## 36 TONNE

### LOAD CHARTS FOR "A", "B", AND "C" COUNTERWEIGHT

LOAD RADIUS (METERS FROM FRONT)	36 TONNE TWINLIFT LOAD CHART														TLLC121		
	FOR USE WITH LIFTING EYE ONLY														1/27/2011		
	STANDARD NON-REMOVABLE "A" COUNTERWEIGHT WITH "B", "C" COUNTERWEIGHT ADDED																
	FULLY EXTENDED							FULLY RETRACTED									
	LOADED BOOM ANGLE	BOOM LENGTH (METERS)						LOADED BOOM ANGLE	BOOM LENGTH (METERS)								
	△°	3.98	△°	5.18	△°	6.40	7.62	8.84	△°	3.98	5.18	△°	6.40	7.62	8.84		
0.00	42	36,200	55	36,200	60	36,200			42	36,200	55	36,200	60	36,200			
0.30	35	36,200	51	36,200	56	36,200			35	36,200	51	36,200	56	36,200			
0.61	26	36,000	47	35,800	53	35,900			26	34,400	47	34,200	53	34,200			
0.91	13	34,100	42	34,000	48	33,900	80	32,700	13	32,100	42	31,900	48	31,800	60	32,000	
1.22			36	32,300	49	32,200	57	30,900			36	29,900	49	29,800	57	29,900	
1.52			30	30,800	46	30,700	54	29,400	60	26,700	30	27,800	46	27,600	54	27,900	
1.83			23	29,400	42	29,300	51	28,000	57	25,800	23	23,600	42	23,600	51	23,900	
2.13			11	28,200	38	28,100	48	26,800	55	24,800	11	20,700	38	20,500	48	20,800	
2.44					33	25,000	45	25,300	53	23,800			33	18,100	45	18,400	
2.74					27	22,400	42	22,700	50	22,800			27	16,200	42	16,500	
3.05	SEE NOTE "E"				21	20,300	38	20,500	47	20,700			21	14,600	38	14,900	
3.35					10	18,500	34	18,700	45	18,900			10	13,300	34	13,500	
3.66							30	17,200	42	17,400				30	12,400	42	12,600
3.96							25	15,900	39	16,100				25	11,400	39	11,600
4.27							19	14,700	35	14,900				19	10,600	35	10,700
4.57							10	13,700	32	13,900				10	9,900	32	10,000
4.88									28	13,000						28	9,300
5.18									23	12,200						23	8,700
5.49									17	11,500						17	8,200
5.79									9	10,900						9	7,700

NOTES:  
 A) FLY SECTION CAPACITIES ARE LIMITED BY ANGLE. DO NOT USE LOAD RADIUS WHEN USING FLY SECTION.  
 B) RATINGS ABOVE THE BOLD LINE ARE BASED ON THE MACHINE'S HYDRAULIC OR STRUCTURAL STRENGTH AND NOT STABILITY.  
 C) RATINGS BELOW THE BOLD LINE ARE BASED ON 85% OF TIPPING.  
 D) ALL CAPACITIES ARE IN KILOGRAMS.  
 E) TELESCOPE CYLINDERS MUST BE FULLY RETRACTED AND AGAINST STOPS.  
 F) BOOM LENGTH IS FROM REAR OF BOOM TO CENTER OF LIFT EYE.

SEE NOTE "E"  
 CAUTION!  
 DO NOT EXTEND OR RETRACT COUNTERWEIGHT WITH ANY LOAD SUSPENDED ON HOOK OR FORKS.

NOTE:  
 Specifications are provided in metric dimensions. All equipment dimensions, designs, specifications, calculations, etc., as described, are subject to change at manufacturer's discretion at any time and without notice. Weights are approximate and may vary. Data herein is for informational purposes only and will not be construed to guarantee suitability of equipment for any particular as performance may vary with conditions encountered. Warranty will apply as written in standard contract form upon purchase of equipment. Capacities are for reference only and must not be used for any serial numbered machine. Serial numbered load charts may be obtained from Lift Systems, Inc.

LIFT SYSTEMS, INC.

OFFICE:  
 1505 - 7th Street  
 East Moline, IL 61244

MAILING ADDRESS:  
 P.O. Box 906  
 Moline, IL 61266

TEL: +1-309-764-9842  
 FAX: +1-309-764-9848  
 EMAIL: liftit@lift-systems.com  
 WEB: www.lift-systems.com