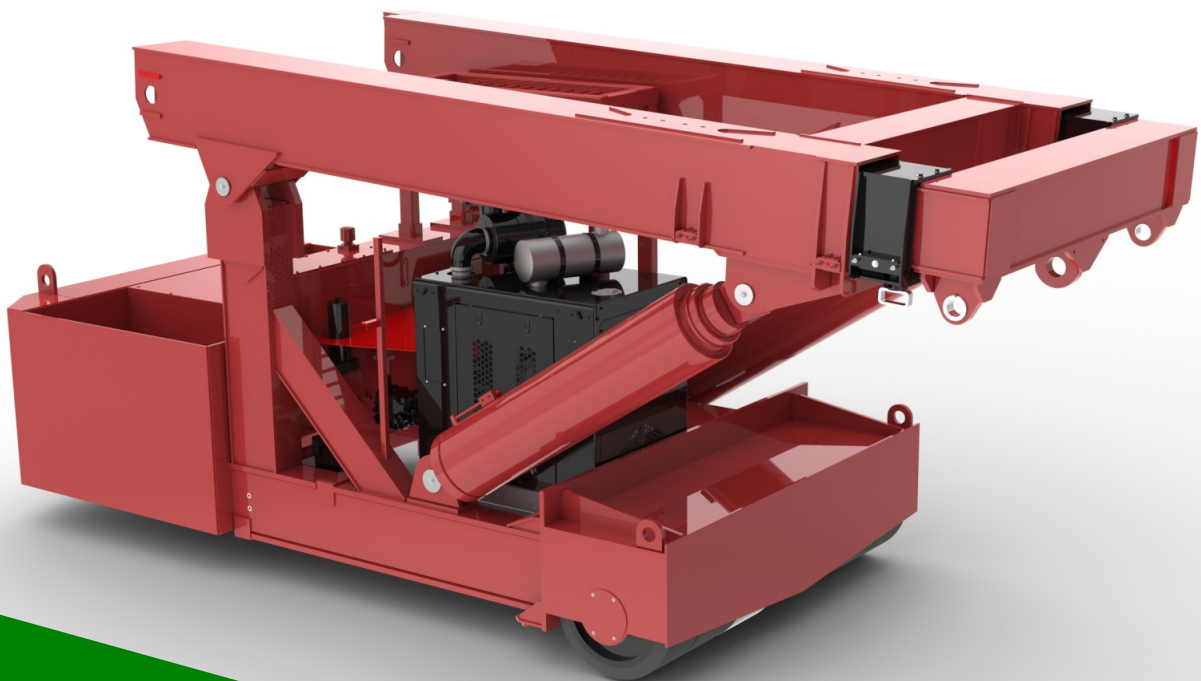




# 110 TON TWINLIFT

by  
LIFT SYSTEMS, INC.



***Global Leaders in Specialized  
Lifting Equipment!***



# TWINLIFT

## 110 TON

### STANDARD EQUIPMENT

**ENGINE:**

Cummins Diesel Engine: QSB4.5P  
160 hp (116 kW) intermittent @ 2500 rpm  
U.S. EPA Tier 3  
CARB Tier 3  
EU Stage III  
Torque @ 1500 rpm, 466 ft-lbs (632 N-m)

**PUMP:**

Sundstrand 90 series drive pump

**CONTROL SYSTEM:**

CARL (Computer Assisted Remote Lifting) Control System.  
Monitors Boom Angle, Boom Extension, Counterweight Extension, Pressure, Counterweight Load Pin. Automatic Shutdown for overload conditions. Large easy to read display screen with push button navigation and dial adjustment.

**CONTROLS:**

Separate controls for each function.  
Combination of foot pedal, joystick, and push button controls allows for multiple functions to be performed at the same time.

**DRIVE:**

Poclain MK35 drive motors (qty. 3)  
(2) in front, (1) in rear steering box.

**WHEELS:**

**Front:** qty. (4)  
Diameter: 28"  
Width: (2) @ 24" and (2) @ 16"  
**Rear:** qty. (2)  
Diameter: 28"  
Width: 16"  
Replaceable polyurethane composition

**STEERING:**

90 degree steering of rear wheels.

**OSCILLATING REAR STEERING BOX:**

Keeps all steering wheels in contact with ground.

**GRADABILITY:**

Unloaded maximum grade is 20%  
Loaded maximum grade is 8%

**GROUND BEARING PRESSURE:**

Loaded Front Tires: 634 psi  
Unloaded Rear Tires: 502 psi

**TRAVEL SPEED UNLOADED:**

Travel Mode - High Gear = 0.0 to 1.70 mph  
Travel Mode - Low Gear = 0.0 to 1.38 mph  
Work Mode - Low Gear = 0.0 to 0.42 mph

**TELESCOPING COUNTERWEIGHT:**

Standard counterweight section telescopes 5' using (2) hydraulic cylinders. Push button control.

**HYDRAULIC RESERVOIR:**

160 gallons (606 liters)

**BOOM LIFT CYLINDERS:**

Twin cylinders capable of lifting and lowering with a full load. Safety holding valves installed on both cylinders. Spherical bearings ensure constant alignment with the boom.

**BOOM TELESCOPE CYLINDERS:**

Twin cylinders capable of telescoping the boom in and out with a full load. Safety holding valves are installed on both cylinders.

**LIFTING EYES:**

Qty. (1) centrally located on boom with 110 ton capacity  
Qty. (2) located on corners of boom with 55 ton capacity each

**WINCH MOUNT:**

Standard mount for optional winch

**WEIGHT:**

58,200 lbs. (26,400 kg)  
Standard "A" counterweight included

**COUNTERWEIGHTS:**

"A" - non-removable counterweight installed in unit  
"B" - qty. (2) - 8,270 each. - 16,540 lbs total  
"C" - qty. (1) - 9,200 lbs  
"D" - qty. (1) - 9,200 lbs  
"E" - qty. (1) - 9,200 lbs

**TIE DOWN / LIFTING EYES:**

Tie down / lifting eyes installed for securing unit during transport and for lifting of the unit.

**DRIVER PROTECTION GUARD:**

Structural overhead guard for operator protection.

**OTHER STANDARD FEATURES:**

Back up alarm, horn, strobe light, operator seat complete with safety belt and electric switch.

### OPTIONAL EQUIPMENT

**RADIO REMOTE CONTROL:**

Radio remote control allows full machine functionality from a wireless radio remote. Allows operator optimal view of load. Emergency safety shutdown switch is standard.

**110 TON SPINNER:**

Allows for 360 degree rotation of load

**HYDRAULIC WINCH:**

Consult factory for available capacities

**FORKLIFT ATTACHMENT:**

Consult factory for available capacities

**JIB EXTENSION:**

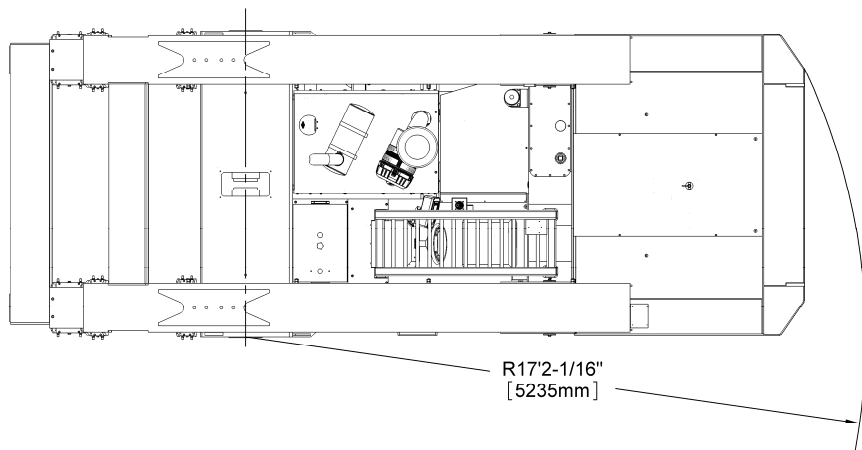
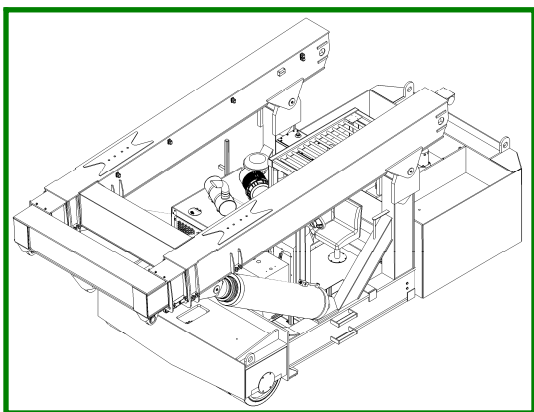
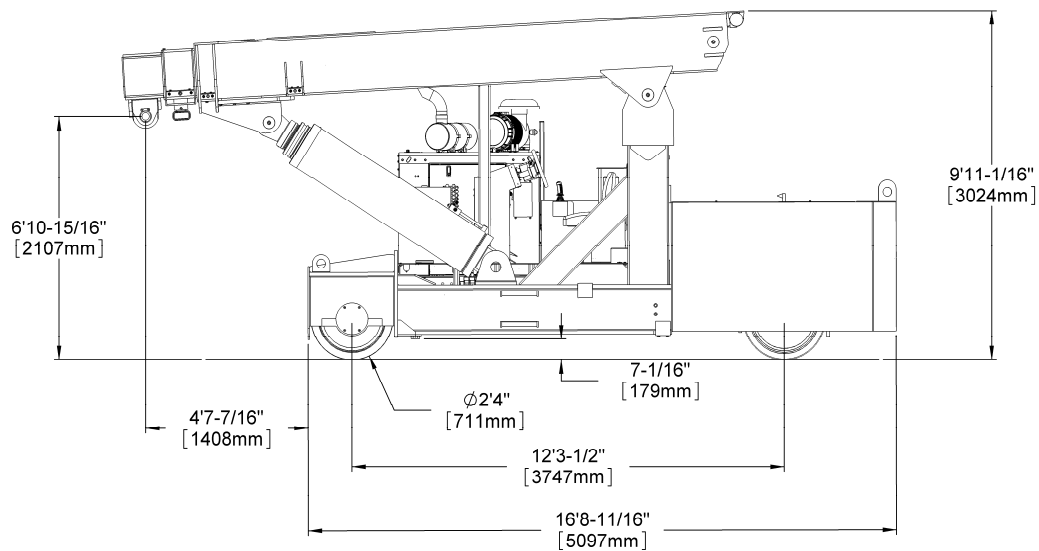
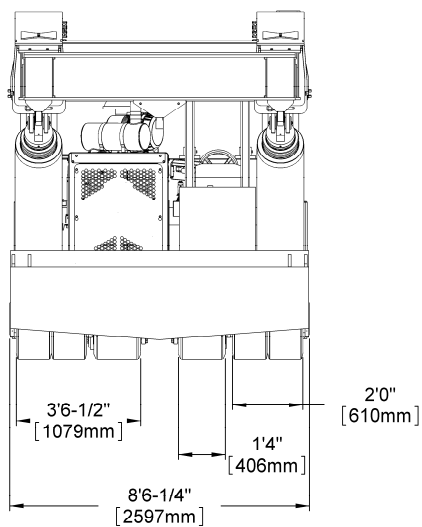
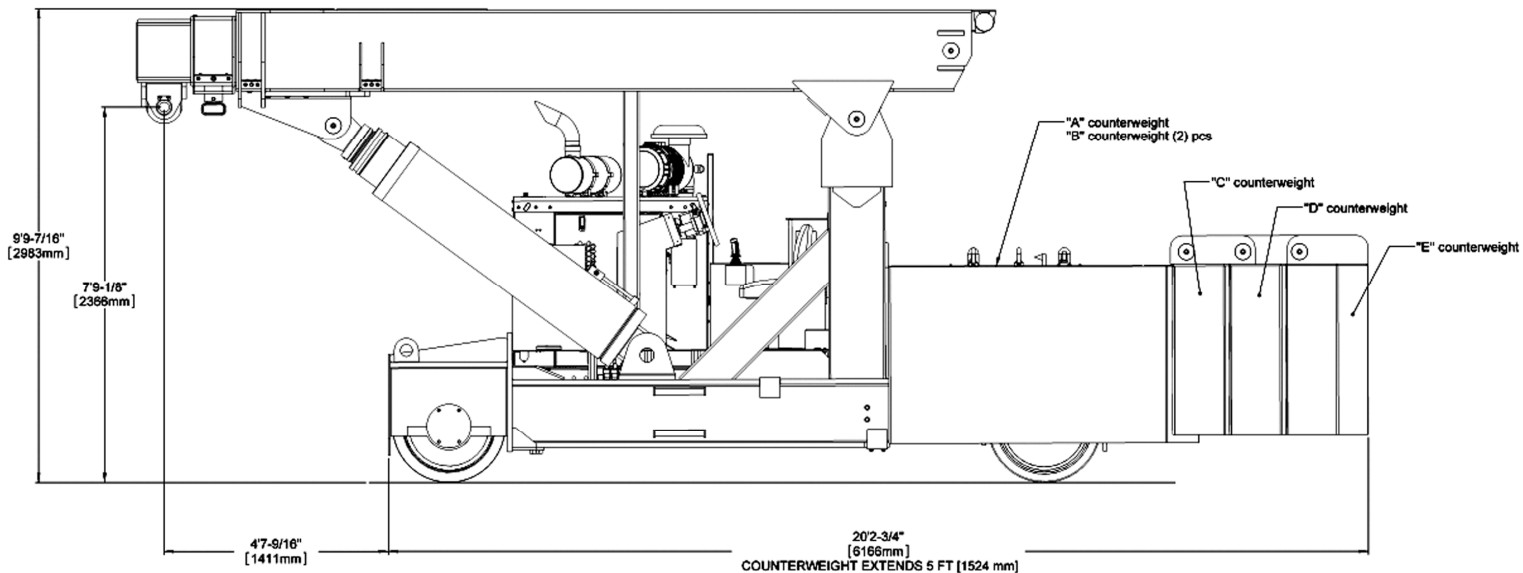
Consult factory for available capacities



# TWINLIFT

## 110 TON

### DIMENSIONAL DATA

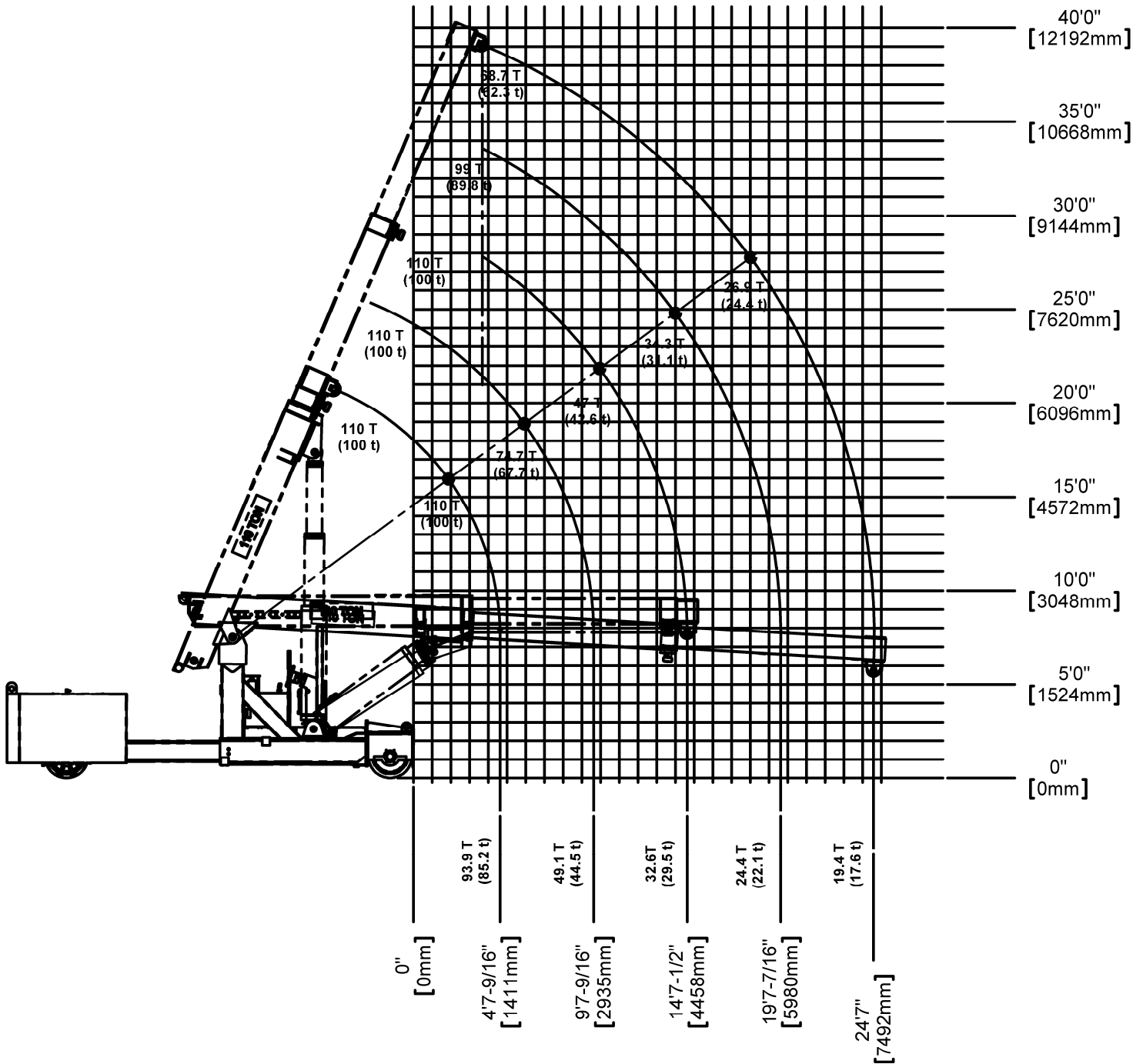




# TWINLIFT

## 110 TON

### REFERENCE CAPACITY / RANGE DIAGRAM



#### NOTE

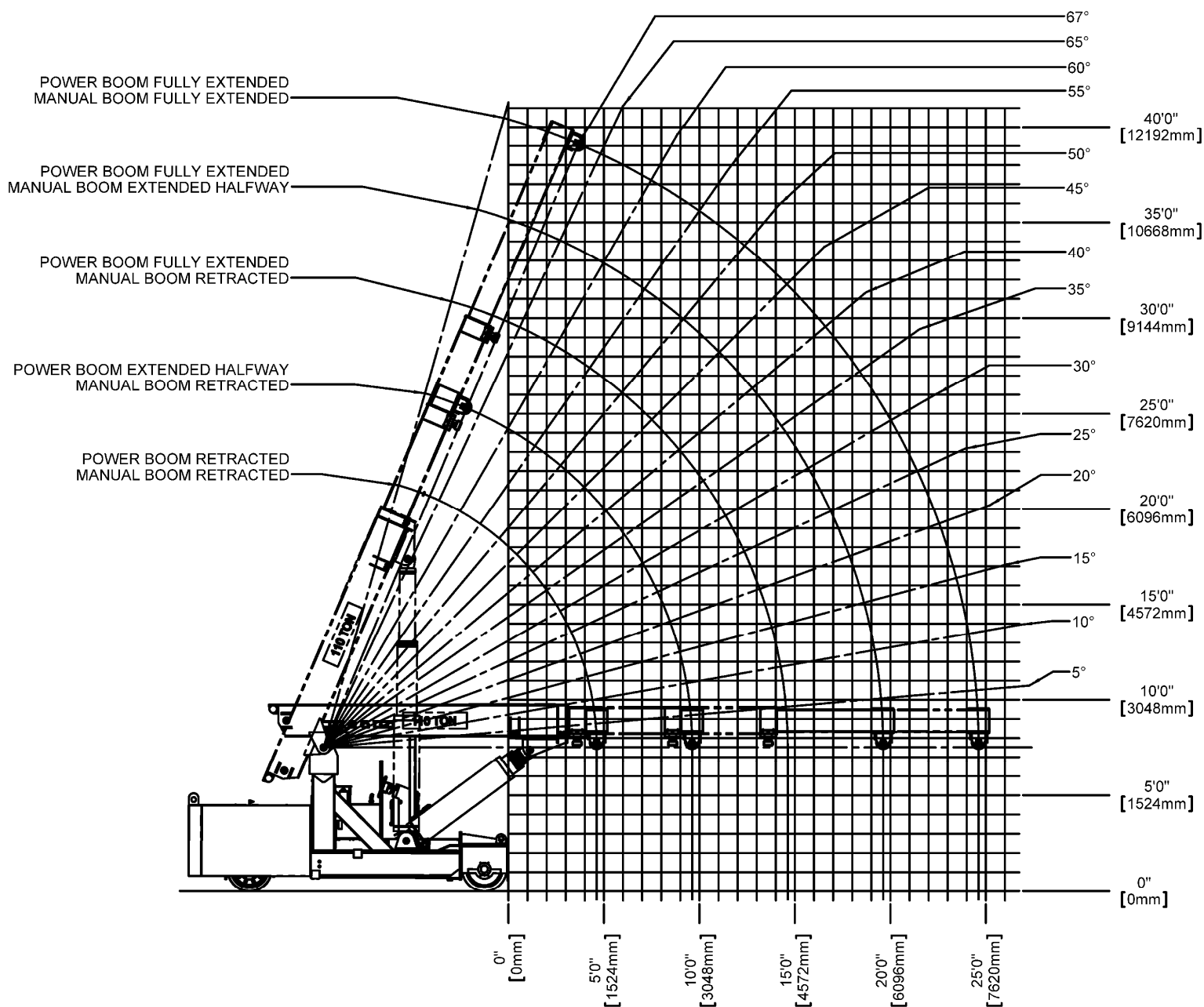
1. The above chart is for reference purposes only.
2. Never use the above chart for lift planning calculations
3. Lift plan calculations are to be determined solely by the load charts and range diagrams that are issued for the specific serial numbered machine that is to be used for the specific planned lift.



# TWINLIFT

## 110 TON

### RANGE DIAGRAM



#### NOTE

1. The above chart is for reference purposes only.
2. Never use the above chart for lift planning calculations
3. Lift plan calculations are to be determined solely by the load charts and range diagrams that are issued for the specific serial numbered machine that is to be used for the specific planned lift.







# TWINLIFT

## 110 TON

### LOAD CHARTS FOR "A", "B", "C", "D", AND "E" COUNTERWEIGHT

LOAD RADIUS (FEET FROM FRONT)	110 TON TWINLIFT LOAD CHART																TLLC144			
	FOR USE WITH LIFTING EYE ONLY STANDARD NON-REMOVABLE "A" COUNTERWEIGHT WITH "B", "C", "D", "E" COUNTERWEIGHT ADDED																4/16/2010			
	FULLY EXTENDED BOOM LENGTH (FEET)								FULLY RETRACTED BOOM LENGTH (FEET)											
	16.5	21.5		26.5		31.5		36.5			16.5	21.5		26.5		31.5		36.5		
-4	66	220,462									66	220,462								
-3	61	220,462									61	220,462								
-2	56	220,462	64	220,462							56	220,462	64	220,462						
-1	51	220,462	60	220,462							51	220,462	60	220,462						
0	46	220,462	56	220,462	66	220,462					46	220,462	59	220,462	66	220,462				
1	40	220,462	55	220,462	63	220,462					40	220,462	55	220,462	63	220,462				
2	33	220,462	52	220,462	60	220,462	66	198,000			33	220,462	52	220,462	60	220,462	66	198,000		
3	25	220,462	48	220,462	58	216,500	64	186,500			25	197,100	48	196,700	58	196,400	64	186,500		
4	14	209,000	44	208,600	55	205,000	61	176,000	66	137,500	14	158,500	44	158,100	55	157,900	61	159,300	66	137,500
4.5	0	187,900									0	142,400								
5			39	174,300	52	174,100	59	166,500	64	131,000		39	131,900	52	131,700	59	132,900	64	131,000	
6			34	149,400	49	149,200	57	150,400	62	125,000		34	112,900	49	112,700	57	113,900	62	114,700	
7	SEE NOTE "E"		29	130,600	46	130,400	55	131,500	60	120,000	SEE NOTE "E"	29	98,500	46	98,300	55	99,400	60	100,200	
8			22	115,900	42	115,700	52	116,700	58	115,000		22	87,200	42	87,000	52	88,100	58	88,800	
9			12	104,000	39	103,800	50	104,800	56	105,500		12	78,200	39	78,000	50	79,000	56	79,600	
9.5			0	98,200							0	73,700								
10					35	94,100	47	95,000	54	95,700				35	70,500	47	71,500	54	72,100	
11					31	85,900	44	86,800	52	87,500				31	64,300	44	65,200	52	65,800	
12					26	79,000	41	79,900	50	80,500				26	59,000	41	59,900	50	60,500	
13					20	73,000	38	73,900	48	74,500				20	54,400	38	55,300	48	55,900	
14					11	67,900	35	68,700	46	69,300				11	50,500	35	51,300	46	51,900	
14.5					0	65,200								0	48,500					
15							32	64,100	43	64,700						32	47,800	43	48,400	
16							28	60,100	41	60,700						28	44,700	41	45,300	
17							23	56,500	38	57,100						23	42,000	38	42,500	
18							18	53,300	35	53,800						18	39,500	35	40,100	
19							10	50,400	32	50,900						10	37,300	32	37,800	
19.5							0	48,900								0	36,200			
20									29	48,300								29	35,800	
21									26	45,900								26	34,000	
22									22	43,700								22	32,300	
23									17	41,700								17	30,800	
24									9	39,900								9	29,400	
24.5									0	38,900								0	28,600	

NOTE:

Specifications are provided in imperial dimensions. All equipment dimensions, designs, specifications, calculations, etc., as described, are subject to change at manufacturer's discretion at any time and without notice. Weights are approximate and may vary. Data herein is for informational purposes only and will not be construed to guarantee suitability of equipment for any particular as performance may vary with conditions encountered. Warranty will apply as written in standard contract form upon purchase of equipment. Capacities are for reference only and must not be used for any serial numbered machine. Serial numbered load charts may be obtained from Lift Systems, Inc.

### LIFT SYSTEMS, INC.

OFFICE:  
1505 - 7th Street  
East Moline, IL 61244

MAILING ADDRESS:  
P.O. Box 906  
Moline, IL 61266

TEL: +1-309-764-9842  
FAX: +1-309-764-9848  
EMAIL: [liftit@lift-systems.com](mailto:liftit@lift-systems.com)  
WEB: [www.lift-systems.com](http://www.lift-systems.com)